

# Ingest Portal

User guide



DOC00451  
June 2022

## Copyright © 2022 LiveU

The software described in this book is furnished under a license agreement and may be used only in accordance with the terms of the agreement.

### **All Rights Reserved**

Any technical documentation that is made available by LiveU is the copyrighted work of LiveU and is owned by LiveU.

### **NO WARRANTY**

The technical documentation is being delivered to you AS-IS, and LiveU makes no warranty as to its accuracy or use. Any use of the technical documentation or the information contained therein is at the risk of the user. Documentation may include technical or other inaccuracies or typographical errors. LiveU reserves the right to make changes without prior notice.

No part of this publication may be copied without the express written permission of LiveU.

### **Trademarks**

LiveU and the LiveU logo are U.S. registered trademarks of LiveU. Other brands and product names mentioned in this manual may be trademarks or registered trademarks of their respective companies and are hereby acknowledged.

---

# Table Of Contents

<b>Introducing the Ingest system</b> .....	<b>1</b>
<b>Introducing the Ingest portal</b> .....	<b>2</b>
Opening the Ingest portal .....	2
Scrolling through a video's thumbnail .....	3
Playing the video .....	4
Viewing GPS coordinates .....	5
Viewing Ingest information .....	5
Downloading the video .....	6
Playback speed and Playing in picture .....	7
Filtering the view .....	8
<b>Appendix A: Ingest LiveU / iNEWS Integration</b> .....	<b>9</b>
Introducing LiveU / iNEWS integration .....	9
Delegating tasks .....	9
Setting up story integration in LU Central .....	9
Adding a user in iNEWS .....	15
Modifying a user account .....	17
Working with queues .....	17
Associating a queue to a TXNET job .....	18
Associating the job with the queue's mailbox .....	19
Creating a story in iNEWS .....	20
<b>Appendix B: Ingest LiveU / Telestream Integration</b> .....	<b>22</b>
Introducing Ingest / Telestream integration .....	22
LiveU / Telestream Vantage integration overview .....	22
Setting up Telestream Vantage .....	22
Configuring AVID Interplay communication .....	24
Importing workflows .....	25
About the example workflow .....	27
Configuring the Watch action .....	28
Configuring the Associate action .....	29
Configuring the Flip64 action .....	31
Configuring the Extract action .....	33
Configuring the Notify action .....	35
Configuring the Media Creation action .....	36
Configuring the second Flip64 action .....	37
Configuring the second Notify action .....	38
Testing the workflow end-to-end .....	40

# Introducing the Ingest system

LiveU's Ingest system enables the ingest of IP streams for television news and remote live TV production.

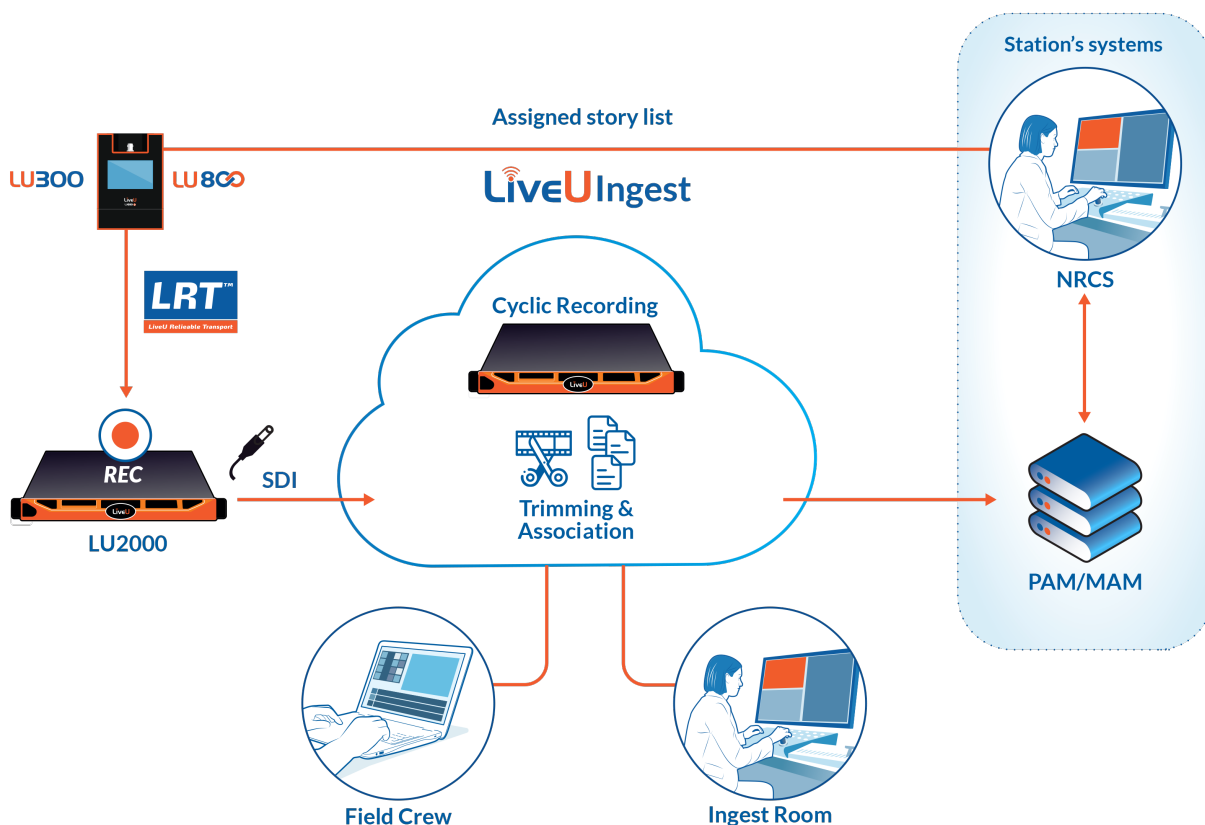
Live video is streamed to LiveU's MMH server, where it is divided into chunks every five seconds. Each chunk is assigned the same ID plus a differentiating suffix from 0 and up. The video is then transferred from the MMH server to a shared folder on the Ingest server, where the video is transcoded.

Several additional folders are created on the Ingest server, including:

- Output: Separates the transcoded output into folders for low resolution and high resolution video files.
- Recording: Copies of the video chunks and IDs that were transferred from the MMH server.

Video recordings can be viewed and managed from the Ingest portal on the LiveU Central management platform.

The following diagram illustrates the flow of information from the LU transmitting unit, to the MMH server to the Ingest server.



# Introducing the Ingest portal

Recorded media is transferred from the MMH server to the shared folder on the Ingest server, where it is transcoded.

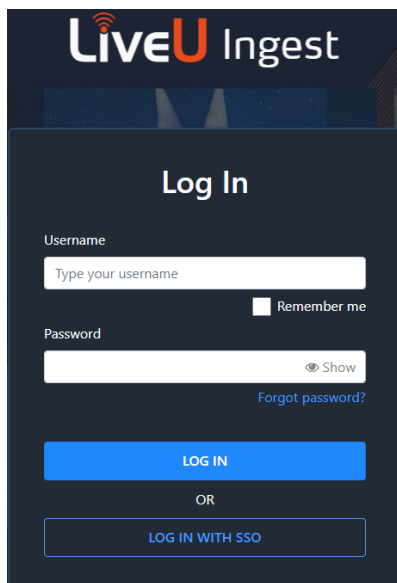
Low resolution video recordings and their associated metadata are displayed in the Ingest portal. From the portal, you can view and download the video, adjust playback speed and view the location of the transmitting unit.

You can access the Ingest portal from the LiveU Central management platform.


## Opening the Ingest portal

### To access the Ingest portal:

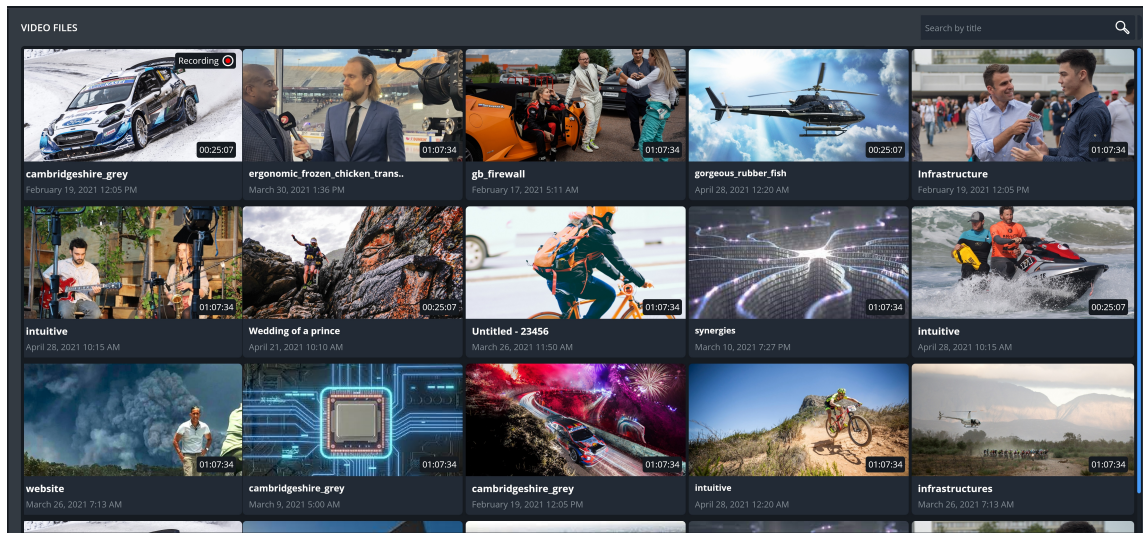
1. Go to <https://ingest.liveu.tv>.  
The LiveU Ingest Log In page appears.



2. Fill in your username and password and click **Log In**.

**Note** Alternatively, you can log in to the LiveU Central management platform, click  at the top left corner of the window and select **Ingest Portal** from the menu.

The Ingest portal window opens, displaying Ingest video thumbnails.

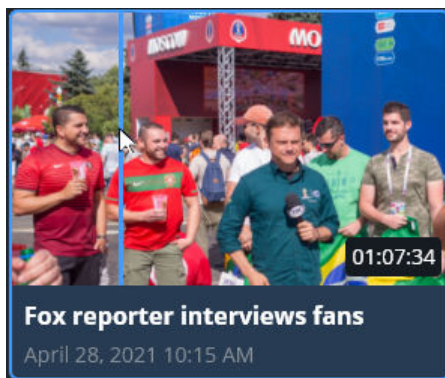


The thumbnails also display the video ID, the date and time of the recording and the timecode. At the bottom of the thumbnail, the video title is displayed. The video title is the same as the metadata slugline.

## Scrolling through a video's thumbnail

The Ingest server's Output folder includes a thumbnails folder. Thumbnails are created every minute from multiple .mjpeg preview images, per recording.

You can scroll through the images by placing the cursor on the thumbnail and dragging the blue line to the left or to the right.

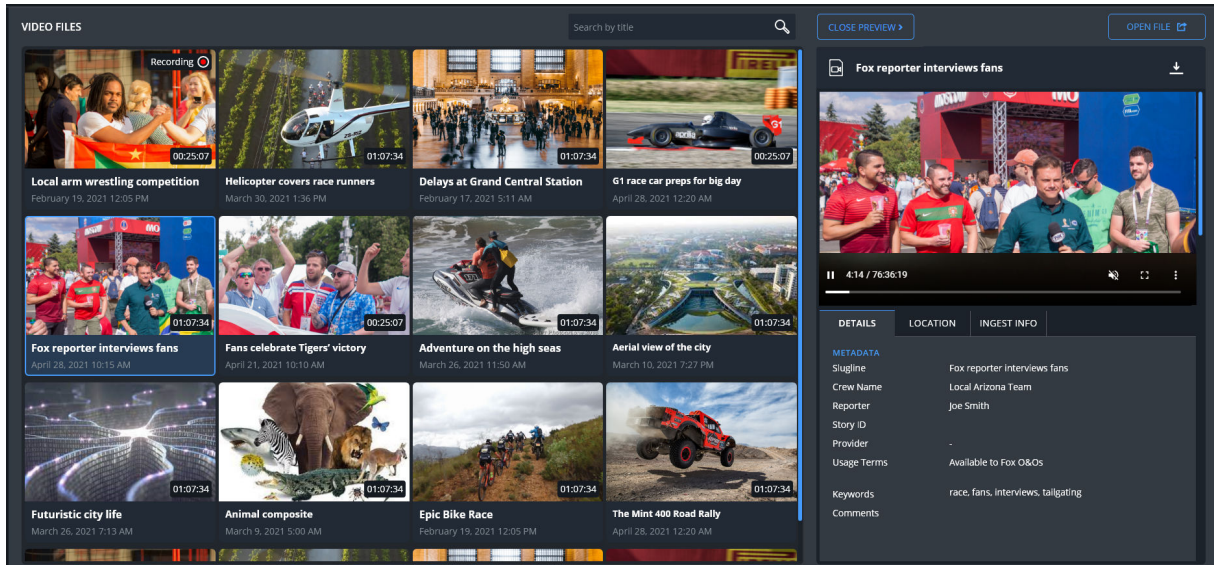




## Playing the video

The Ingest portal is populated with the thumbnails of all the video files on the Ingest server.

Clicking a thumbnail opens the video in low resolution on the right side of the portal window.



The selected thumbnail is outlined in blue.

From the video preview pane, you can do the following:

- View / pause video playback
- Download the video
- Adjust playback speed
- View video in a floating window

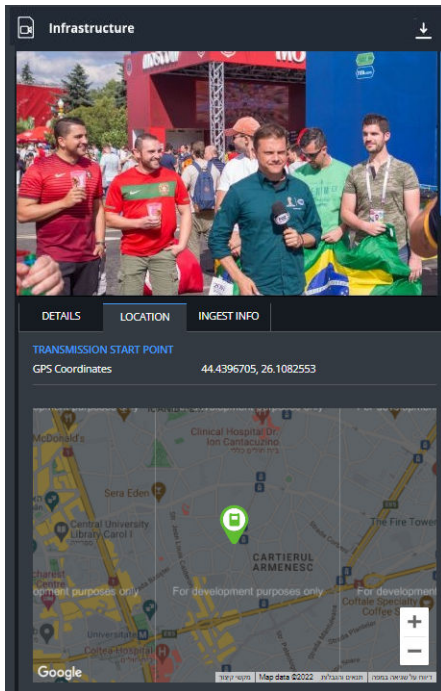
An option to trim the video will become available shortly.

The **Details** tab displays the video's metadata and provides information on the video, such as file size and video resolution.

The video plays back until the end of the recording. If the recording session is still in progress, the playback updates on the fly. If there is a delay between the ongoing recording session and its upload to the Ingest server, a revolving indicator appears on the video screen.

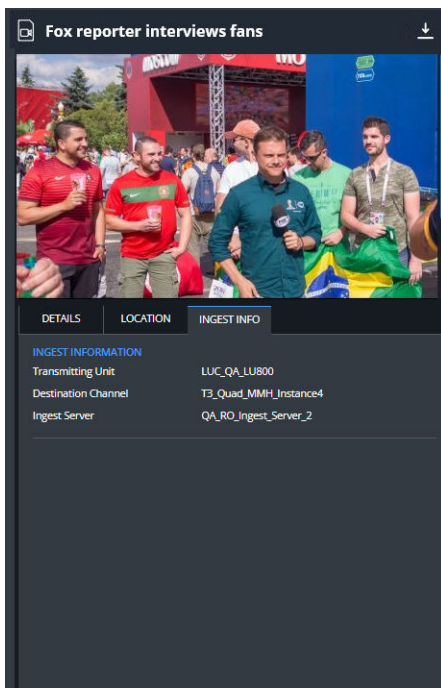
## Viewing GPS coordinates

In the right pane, clicking the **Location** tab displays the GPS coordinates of the transmitting unit.



## Viewing Ingest information

In the right pane, clicking the **Ingest Info** tab displays the name of the transmitting unit, the destination channel and the Ingest server name.

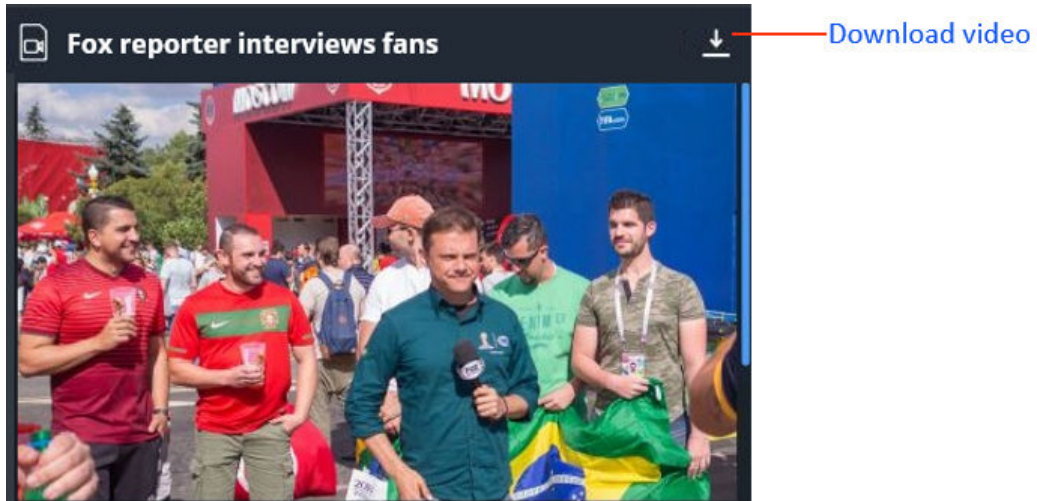




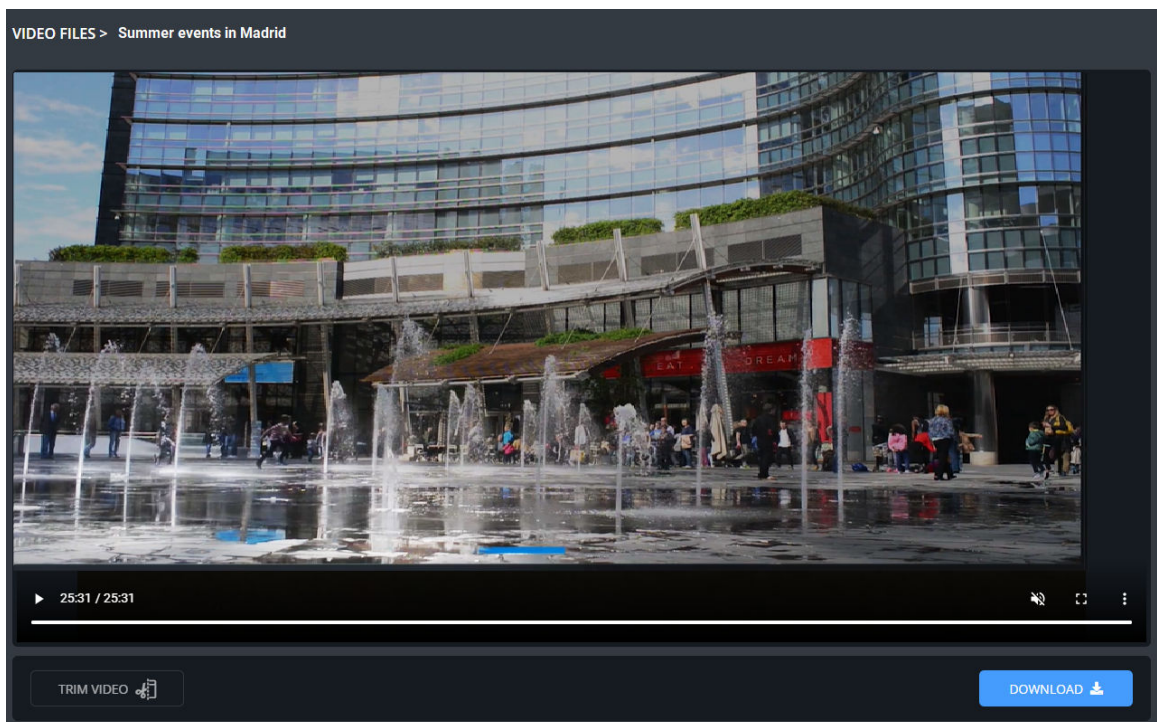
## Downloading the video

You can download the video from the following locations:

- Video preview pane: Click the **Download** icon.



- Video file: Click the **Download** button.



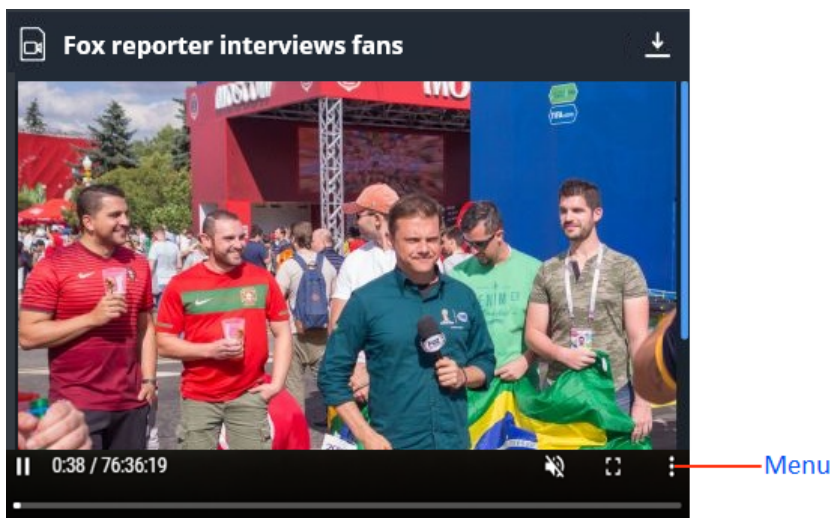
## Playback speed and Playing in picture

From the Ingest portal, you can do the following:

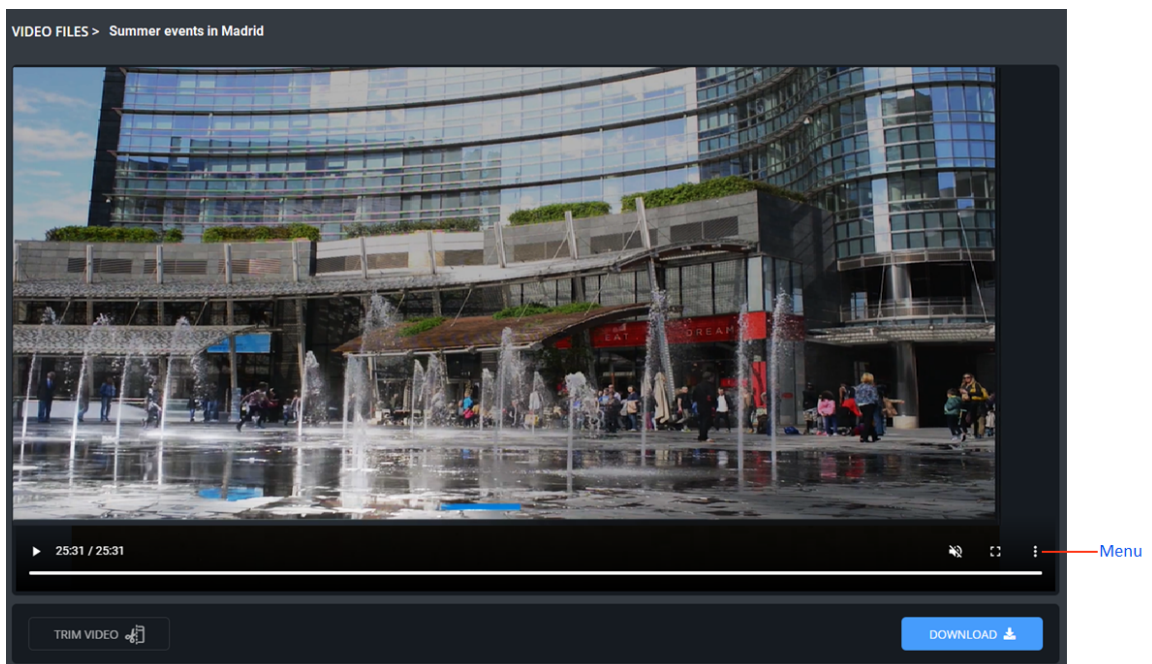
- Adjust playback speed
- Play Picture in picture

You can access these options by clicking the menu in the following locations:

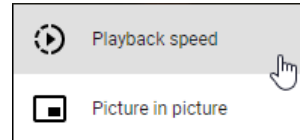
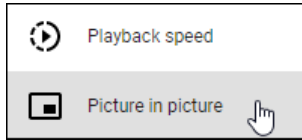
- Video preview:



- Video file:



You can then select one of the following options from the popup menu.

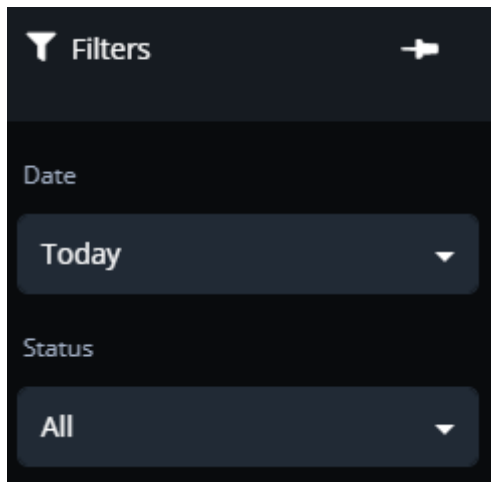


## Filtering the view

You can filter the type and dates of the videos that are displayed in the Ingest portal.

### To filter the view:

1. Move the mouse over the left side of the portal window.  
The Filters panel slides out.



You can click the pin to prevent the panel from sliding back.

2. From the **Date** dropdown list, select **All**, **Today** or **Yesterday**.

# Appendix A: Ingest LiveU / iNEWS Integration

## Introducing LiveU / iNEWS integration

LiveU is integrating with iNEWS AVID to enable the sharing of story queues configured in iNEWS.

iNEWS AVID allows the user to add / delete and schedule specific stories to and from the queue.

The queues are shared with LiveU and their associated stories (metadata) are displayed in LiveU Central.

**Note** AVID technology is now known as Media Central for Newsroom Management. However, iNEWS continues to be used in its integration process with LiveU and is referred to by that name in this guide.

## Delegating tasks

On purchase of the integration license, the LU Central user receives an iNEWS user name and password. This license enables access to the FTPS server, which interfaces between LU Central and iNEWS.

The following table describes the respective tasks that are performed first in LU Central and then in iNEWS.

Central user	iNEWS user
Upload the XSLT file in the Story Synchronization Settings window.	
Enter required information into the System Configuration fields	
	Add a user
	Create a queue
	Associate the queue to a TXNET job
	Associate the job with the queue's mailbox
	Create a story

## Setting up story integration in LU Central

On activation of the iNEWS integration license, a user name is automatically generated in LiveU.

The procedure has two sections: Uploading the XSLT file and Configuring story integration settings.

## Uploading the XSLT FILE

The XSLT file parses the story parameters provided by iNEWS and maps them to the parameters used by LiveU.

### To upload the XSLT file:

1. In LiveU Central, click the **Stories** tab.
2. At the top of the screen, click **Settings**.
3. In the Metadata Mapping area, click **Upload File**.

Story Integration Settings - Inventory

NRCS SYNC TEST MAPPING

NRCS Story Synchronization  OFF

System Configuration Metadata Mapping

NRCS System iNEWS Avid

Sync Interval 5 minutes

Story FTPS Export Credentials

URL liveu.files.com

User

Password SHOW

Upload the XSLT file provided by LiveU Support for your inventory

Use the upload button to browse your computer

UPLOAD FILE

Supported file types XSLT

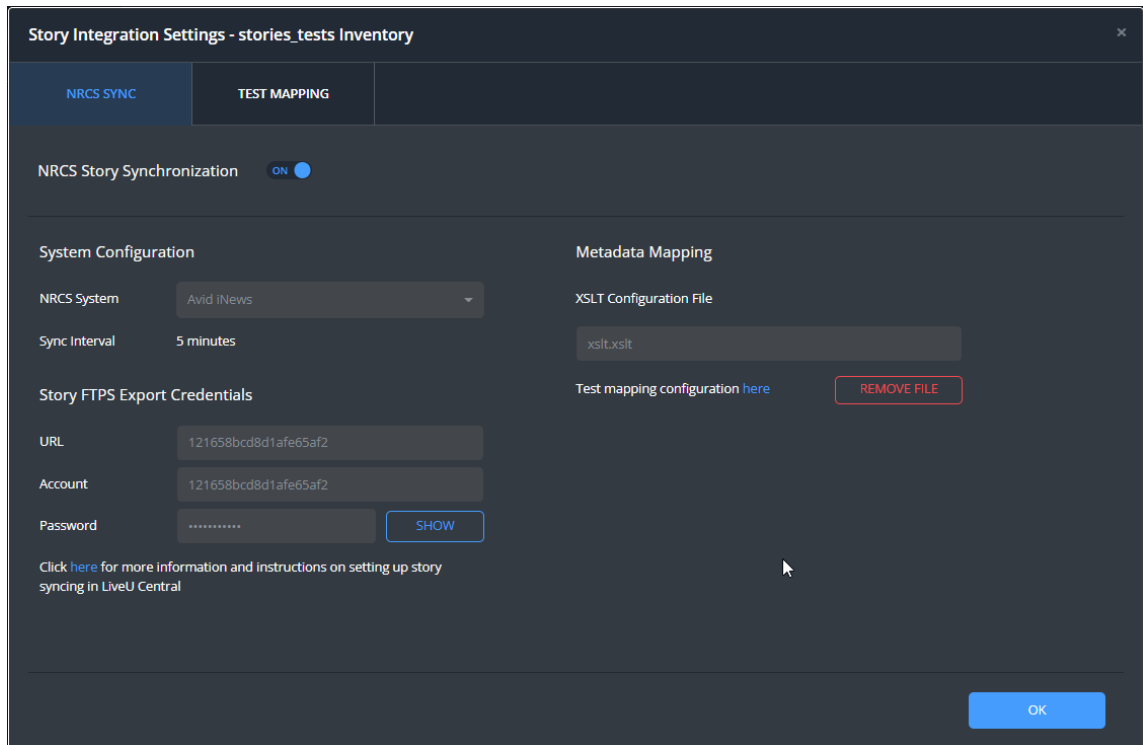
Click [here](#) for more information and instructions on setting up story syncing in LiveU Central

OK

Uploading the XSLT file allows iNEWS to create templates at a later date that are compatible with the parameters supported by LiveU.

4. Browse to the XSLT file you want to use to map with the XML file provided by iNEWS and click **Open**.

The XSLT file name is displayed in the field.



NRCS Story Synchronization switches to ON.  
Here is an example of the LiveU XSLT file.



```

<?xml version="1.0" encoding="UTF-8"?>
<xsl:stylesheet version="1.0" xmlns:xsl="http://www.w3.org/1999/XSL/Transform">
  <xsl:output omit-xml-declaration="no" indent="yes" />
  <xsl:template match="/nsml">
    <story>
      <storyId>
        <xsl:value-of select="head/storyid" />
      </storyId>
      <slugline>
        <xsl:value-of select="fields/string[@id = 'title']" />
      </slugline>
      <reporter>
        <xsl:value-of select="fields/string[@id = 'v-reporter']" />
      </reporter>
      <comments>
        <xsl:value-of select="body/p" />
      </comments>
      <crewName>
        <xsl:value-of select="fields/string[@id = 'v-crew']" />
      </crewName>
      <lastModified>
        <xsl:value-of select="fields/date[@id = 'modify-date']" />
      </lastModified>
      <usageTerms>
        <xsl:value-of select="fields/string[@id = 'v-terms']" />
      </usageTerms>
      <provider>
        <xsl:value-of select="fields/string[@id = 'v-provider']" />
      </provider>
      <keywords>
        <xsl:value-of select="fields/string[@id = 'v-keywords']" />
      </keywords>
    </story>
  </xsl:template>
</xsl:stylesheet>

```

If you encounter a problem uploading the file, or if you need help in creating a compatible template, contact [LiveU support](#).

### Configuring story integration settings

The following procedure is performed after the XSLT file has been uploaded to LiveU. After the XSLT file is uploaded, NRCS Story Synchronization automatically switches to ON.

### To configure story integration settings:

1. In LiveU Central, click the **Stories** tab.
2. At the top of the screen, click **Settings**.

The following screen appears.

Story Integration Settings - stories\_tests Inventory

NRCS SYNC TEST MAPPING

NRCS Story Synchronization

System Configuration

NRCS System Avid iNews

Sync Interval 5 minutes

Story FTPS Export Credentials

URL 121658bcd8d1afe65af2

Account 121658bcd8d1afe65af2

Password ..... SHOW

Metadata Mapping

XSLT Configuration File xslt.xslt

Test mapping configuration [here](#) REMOVE FILE

Click [here](#) for more information and instructions on setting up story syncing in LiveU Central

OK

The **NRCS System** field is filled in by default.

In the System Configuration area, the frequency with which the FTPS server scans iNEWS for new stories is specified in the **Sync Interval** field. This is the default interval and it cannot be changed.

In the Story FTPS Export Credentials area, the address of the FTPS server is displayed in the **URL** field by default.

3. Click **Show** next to the **Password** field.
4. Type your LU Central password into the field and click **OK**.

You are returned to the Story Integration Settings screen.

The system generates a user name and password to use in the iNEWS integration process.

Story Integration Settings - stories\_Inventory

NRCS SYNC TEST MAPPING

NRCS Story Synchronization

System Configuration

NRCS System iNEWS Avid

Sync Interval 5 minutes

Story FTPS Export Credentials

URL liveu.files.com

User 121658bcd8d1af

Password died54609hhu

Click [here](#) for more information and instructions on setting up story syncing in LiveU Central

Metadata Mapping

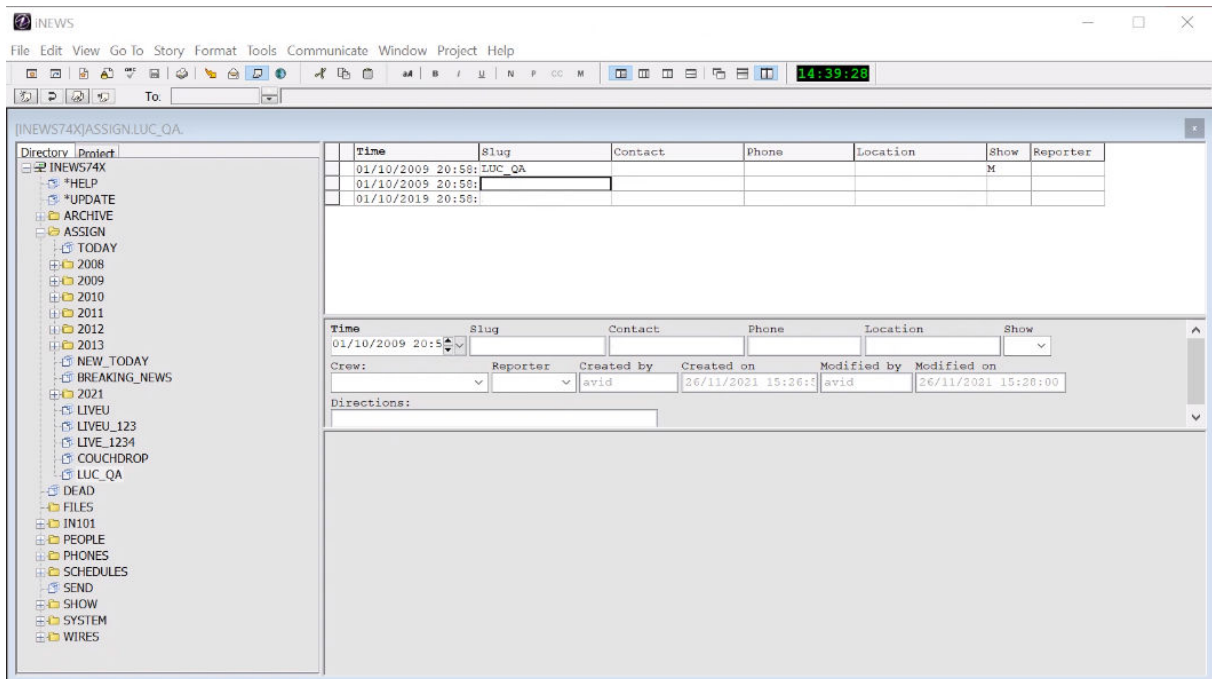
XSLT Configuration File xslt.xslt

Test mapping configuration [here](#)

5. Click **OK**.

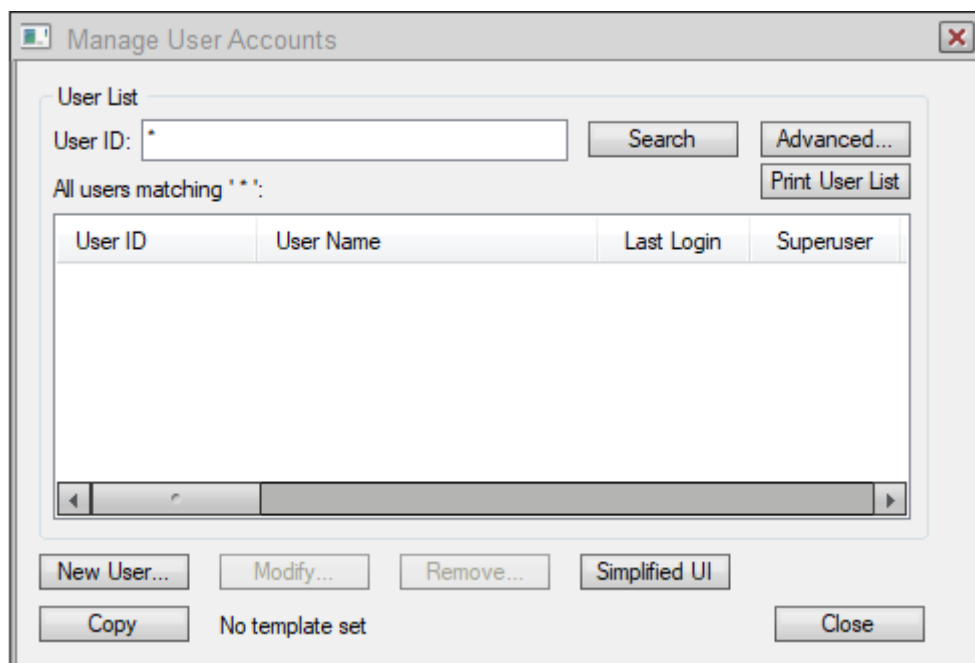
**Note** It is recommended that you copy / paste the URL, user ID and password and keep them in an accessible location. All these items are required for completing the integration process in iNEWS.

## Adding a user in iNEWS



### To add a user in iNEWS:

1. In the iNEWS main screen, in the **Directory** tab in the left pane, go to **Tools > Options > Users**.  
The Manage User Accounts screen appears.



2. Click **New User**.

The Add New User screen appears.

3. Type or paste your user ID into the **User ID** field.  
Your user ID was auto-generated in the LU Central Story Integration Settings window.
4. In the Password area, click **Password**
5. Type or paste your password into the password fields.  
Your password was auto-generated in the LU Central Story Integration Settings window.
6. Click **Add** and then click **Close**.  
You are returned to the iNEWS main screen.

If you are working with iNEWS version 2021.3 and up, you need to perform the following to add the TXNET user to the vault.

### To add the TXNET user to the vault:

1. Log in to your iNEWS Linux server via SSH.
2. Execute the following command:  

```
vaultctl add LiveUFTP user
```

 Password:  
 Re-enter password:  
 The following message appears: Credentials for user LiveUFTPuser successfully added.  
 Your user ID and password were auto-generated in the LU Central Story Integration window.

## Modifying a user account

### To modify a user account:

1. In the iNEWS main screen, go to **Tools > Options > Users**.
2. Type the first few characters of the user's ID followed by an asterisk (\*) in the **User ID** field then click **Search**.  
User IDs matching your search string appear in the pane
3. Double-click the user ID whose account you want to modify.  
The Modify User Account screen appears.

4. Modify the user's details as required.
5. Click **OK** and then click **Close**.

## Working with queues

Stories are assigned to queues. The iNEWS user can use an existing queue for new stories or create a new queue.

### To create a queue:

1. In the iNEWS main window, in the **Directory** tab in the left pane, right-click **Assign**.
2. From the sub-menu, select **New Queue**.  
A new queue appears in the LiveU tree. The default name **New-Queue** is highlighted.
3. Type a descriptive name for the queue to replace the default name.



**To delete a queue:**

1. In the iNEWS main window, in the **Directory** tab, in the left pane, right-click the queue you want to delete.
2. From the sub-menu, select **Delete Queue**.  
The Confirm Delete window appears.
3. Click **Yes**.  
Selecting **Answer 'Yes' to all** deletes all the queues in the directory.  
The selected queue is deleted.

## Associating a queue to a TXNET job

Each queue you want to share with LiveU must be associated with a TXNET job.

TXNET is the protocol over which the story assignments in the selected queue are shared with the user account in the FTPS server. The job synchronizes the queue with the FTPS server.

Configuring the TXNET job is performed once per queue.

**To associate a queue to a TXNET job:**

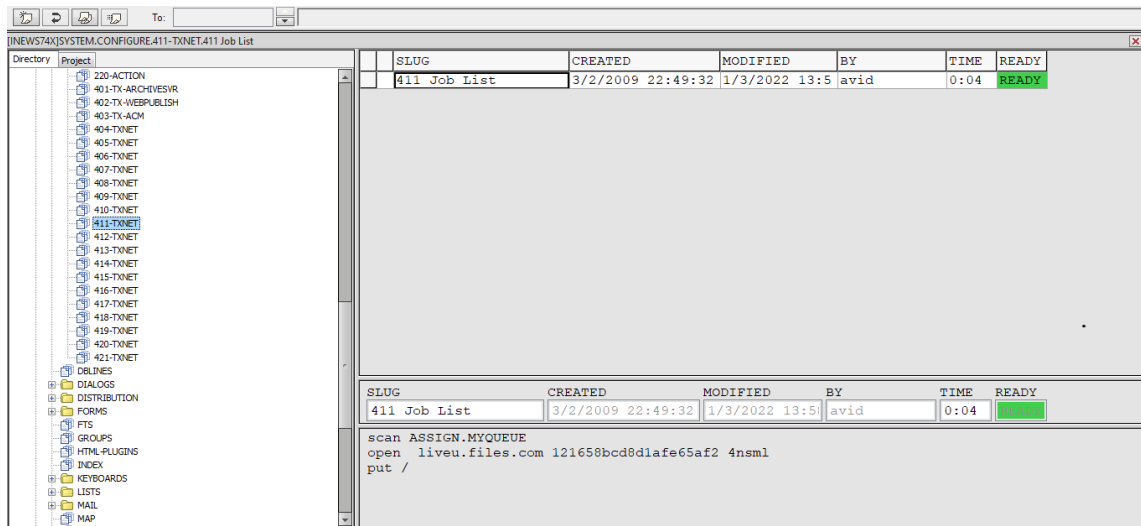
1. In the iNEWS main window, in the **Directory** tab in the left pane, expand **Assign** to display the LiveU queue directory.
2. Select a queue.
3. Expand **System > Configure**.
4. Scroll down the Job List and double-click an available job that is associated with TXNET.  
The selected job number is displayed under **Slug** in the right pane. The job number is also used for the mailbox number.
5. Copy or make a note of the Job List number.
6. In the right pane, type the following:  
`scan <queue name>`  
`open <URL> <username> 4nsm1`

**Note** Use the URL and user name you copied from the LU Central Story Integration Settings window.

```
put /
```

**Note** `put /` indicates that the stories in the queue are to be transferred to the FTPS server.

The following is an example.



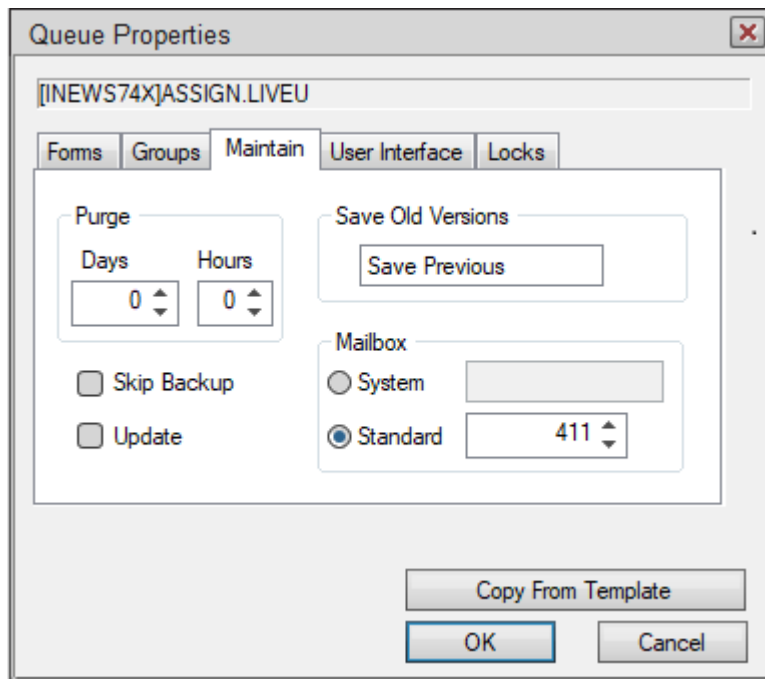
The system scans the selected LiveU queue and forwards the queue's assignments to the shared directory on the FTPS server.

LiveU Central then displays the story in the list in the **Stories** tab.

## Associating the job with the queue's mailbox

### To associate the job with the queue's mailbox:

1. In the iNEWS main window, in the **Directory** tab in the left pane, expand **Assign** to display the LiveU queue directory.
2. Right-click the required LiveU queue and from the sub-menu, select **Properties**. The Queue Properties screen appears.
3. Click the **Maintain** tab.
4. In the Mailbox area, in the **Standard** field, click the arrows to display the mailbox number.



5. Click **OK**.

## Creating a story in iNEWS

You need to add stories manually.

### To create a story in iNEWS:

1. Log in to iNEWS.
2. In the left pane, in the **Directory** tab, expand the **Assign** folder to display the **LiveU** queue directory.
3. Select the required LiveU queue, then select **File > New Story**.  
In the right pane, a new row is added at the top of the story grid.  
The **Time** column shows the time the story was created.
4. Type the name of the story in the **Slug** column
5. Type the relevant information in the remaining columns.

	Time	Slug	Contact	Phone	Location	Show	Reporter
	10/1/2022 20:51:	This is your life	PC	5555555555	Kansas		John
	10/1/2022 20:52:	Weather	DD	5555555555	New York		Isaac
	10/1/2022 20:55:	Sporting life	FG	5555555555	Washington		Fleur
	10/1/2022 20:58:	Cooking	ZC	5555555555	Portland		James

6. Fill in the story's metadata.

<b>Time</b>	<b>Slug</b>	<b>Contact</b>	<b>Phone</b>	<b>Location</b>	<b>Show</b>
10/1/2009 20:51					
<b>Crew:</b>	<b>Reporter</b>	<b>Created by</b>	<b>Created on</b>	<b>Modified by</b>	<b>Modified on</b>
		avid	12/28/2021 12:07:51	avid	12/28/2021 12:07:51
<b>Directions:</b>					

7. In the right pane, type a comment, if required.
8. Open the **Stories** tab in LU Central and refresh the view.  
The story is pushed to the FTPS server and is displayed in the **Stories** list.

# Appendix B: Ingest LiveU / Telestream Integration

## Introducing Ingest / Telestream integration

LiveU's Ingest system enables media to be recorded on all channels and archived in a shared folder on the Ingest server.

The media can be monitored and managed via the Ingest portal.

In addition, LiveU's Ingest solution enables the automatic and manual forwarding of all or specific media files and associated metadata to an external MAM / PAM system.

This option is available by integrating a 3rd party software, the Telestream Vantage media processing platform.

### Prerequisites

Telestream Vantage license: V-XCODECONN-SW

*Vantage Transcode Connect: Software Only, Single Server License. Includes Vantage Workflow Designer, SD & HD New Media, Edit, H.264 and MPEG-2 Transcoding Format support. Also includes broadcast server monitoring, XML metadata transformation and delivery, web service notification.*

## LiveU / Telestream Vantage integration overview

LiveU recording sessions are transferred together with their associated metadata from a shared folder on LiveU's Ingest server to external MAM/PAM archiving systems, using the Telestream Vantage media processing platform.

Telestream Vantage identifies the presence of a media file in the Ingest shared folder, extracts the associated metadata, processes and formats the video, and checks-in the file to AVID archives, using AVID protocols.

This guide describes how Telestream Vantage is used to push recorded media from a shared folder on the Ingest server to the AVID MAM/PAM archiving system.

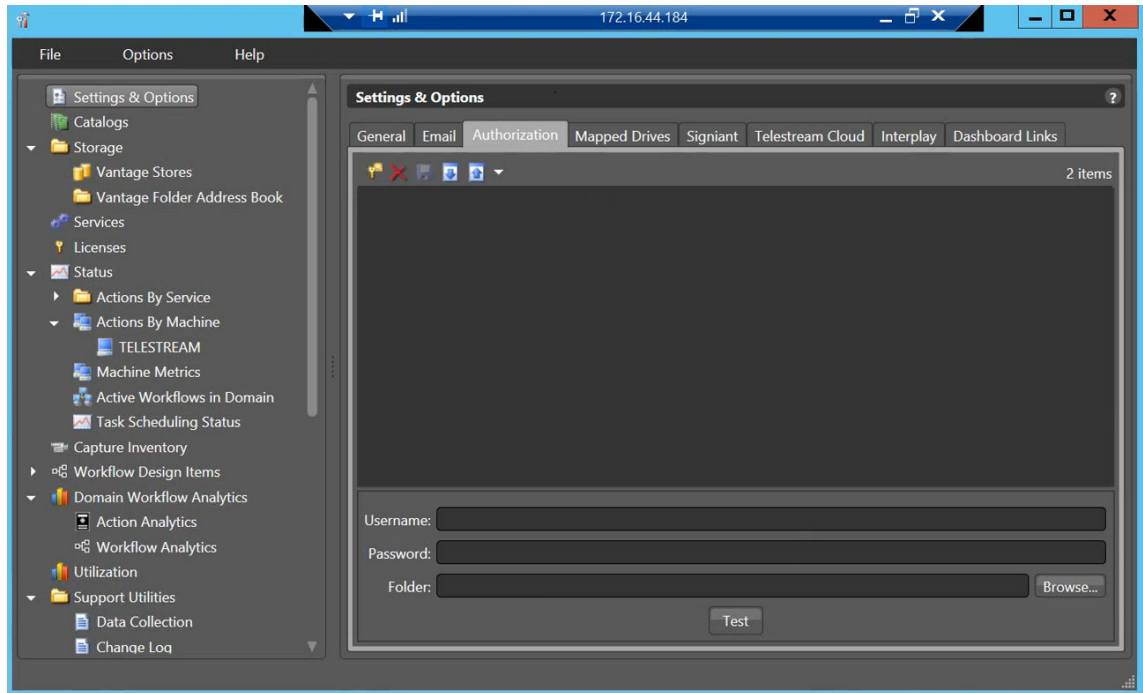
## Setting up Telestream Vantage

This procedure is performed from the Telestream Vantage Management console.

**Note** Before you begin this procedure, make sure that you can access the Ingest server from the machine on which Telestream Vantage is installed.

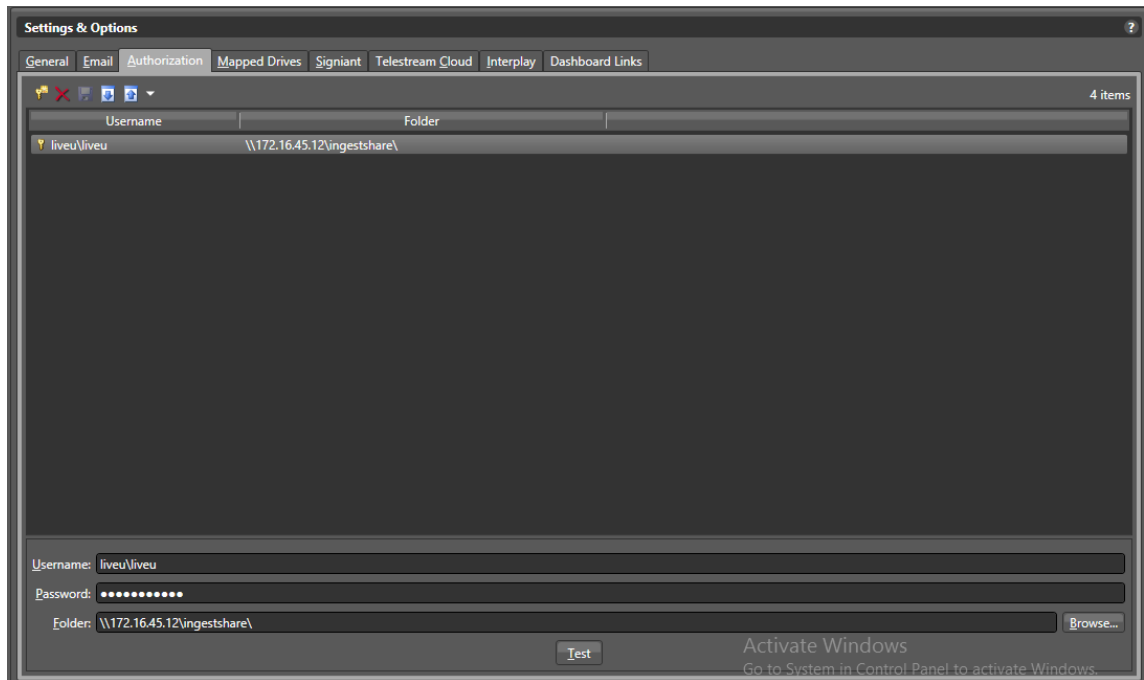
## To set up Telestream Vantage:

1. Open the Telestream Vantage Management console.  
The following window appears. The **Settings & Options > General** tab is active.



2. Click the **Authorization** tab.
3. At the bottom of the window, add the following credentials:
  - Username: <company domain / user name>/liveu
  - Password: liveuingest
  - Folder: <ip\_ingest\_server\ingestshare>
4. Click **Test** .  
A message appears confirming that the specified credentials are valid.
5. Click **Save** .  
The company's domain / user name appears at the top of the pane. The following figure shows an example, using LiveU credentials.





## Configuring AVID Interplay communication

This procedure is performed from the Telestream Vantage Management console.

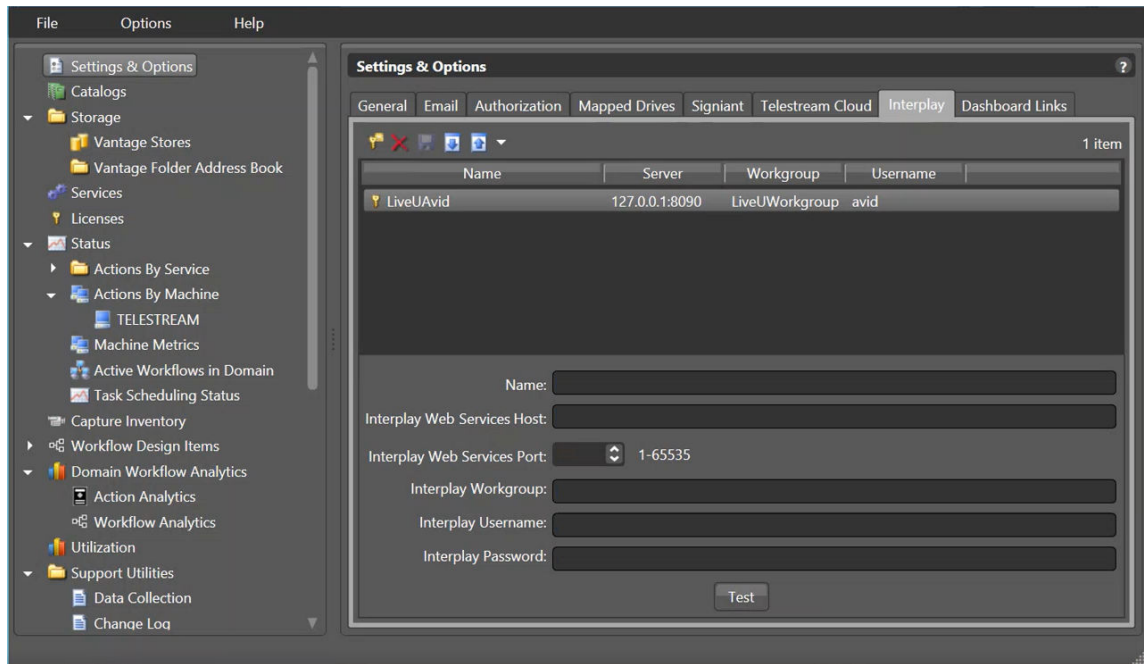
Communication with AVID Interplay is through an interplay web services interface (IPWS).

The IPWS can be installed on one of the devices on the AVID network or installed locally on the Telestream setup.

**Note** If you are already using Telestream Vantage and AVID, the IPWS exists in your setup.

### To configure AVID Interplay communication:

1. In Telestream Vantage Management, click the **Interplay** tab.  
The following window is displayed.



2. At the bottom of the window, fill in the following fields:
  - Name: LiveUAvid
  - Interplay Web Services Host: IP of the IPWS host
  - Interplay Web Service Port: Port number of the IPWS host
  - Interplay Workgroup: LiveUWorkgroup
  - Interplay Username: AVID
  - Interplay Password: <Company Admin assigned password>
3. Click **Test** and then click **Save**.

## Importing workflows

The following procedure is performed from the Telestream Vantage Workflow Designer.

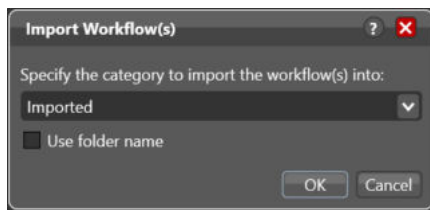
LiveU has provided your organization with an example workflow. This workflow offers an example of how to complete the workflow configuration process. However, some settings can be changed according to your organization's requirements.

The example workflow must be copied to the machine where Telestream Vantage is installed before it can be imported into the Workflow Designer.

### To import workflows:

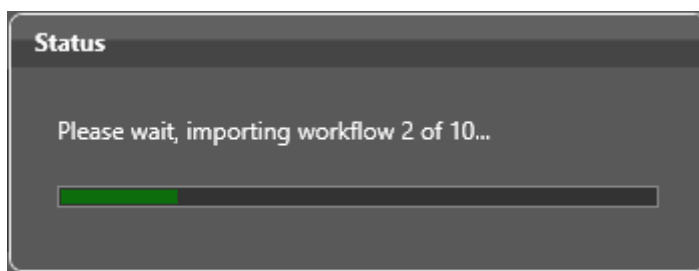
1. In the Vantage Workflow Designer, from the **File** menu, select **Import Workflows**.
2. Navigate to the LiveUIngest directory, select the LiveU example workflow and click **Open**.

The following window appears.

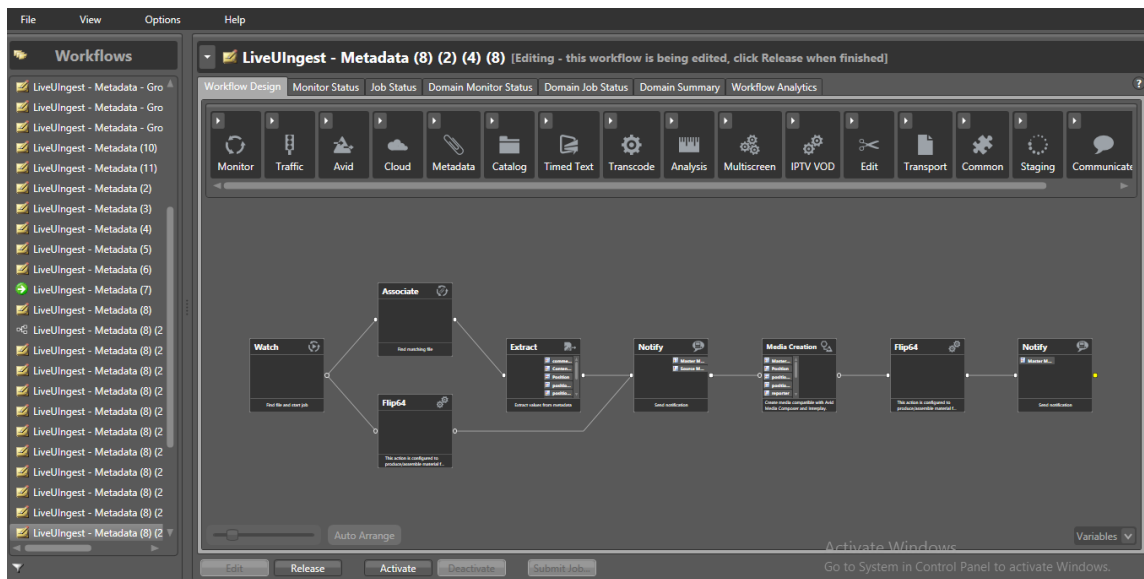


3. Type or select from the dropdown menu the workflow category and click **OK**.  
Selecting **Use folder name** allows you to use the name of the folder, containing the imported workflows, as the category name.

A counter displays the import status of the files.



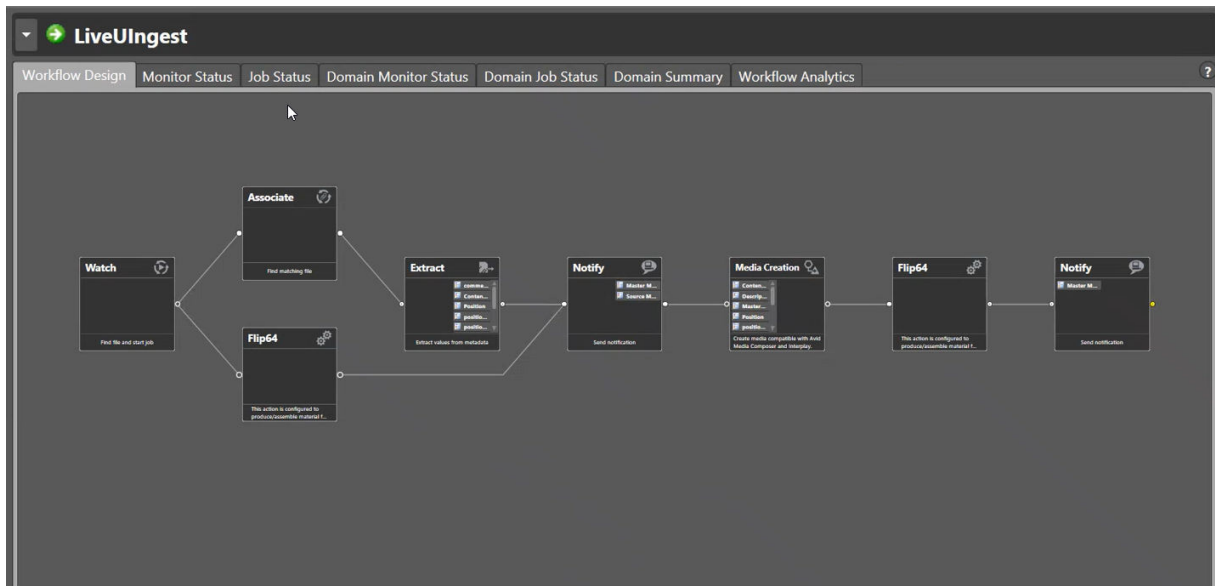
The workflow actions are displayed in the right pane.



Each node in the workflow is referred to as an action.

### Example workflow

LiveU has provided your organization with an example workflow to help you configure the workflow for your organization.

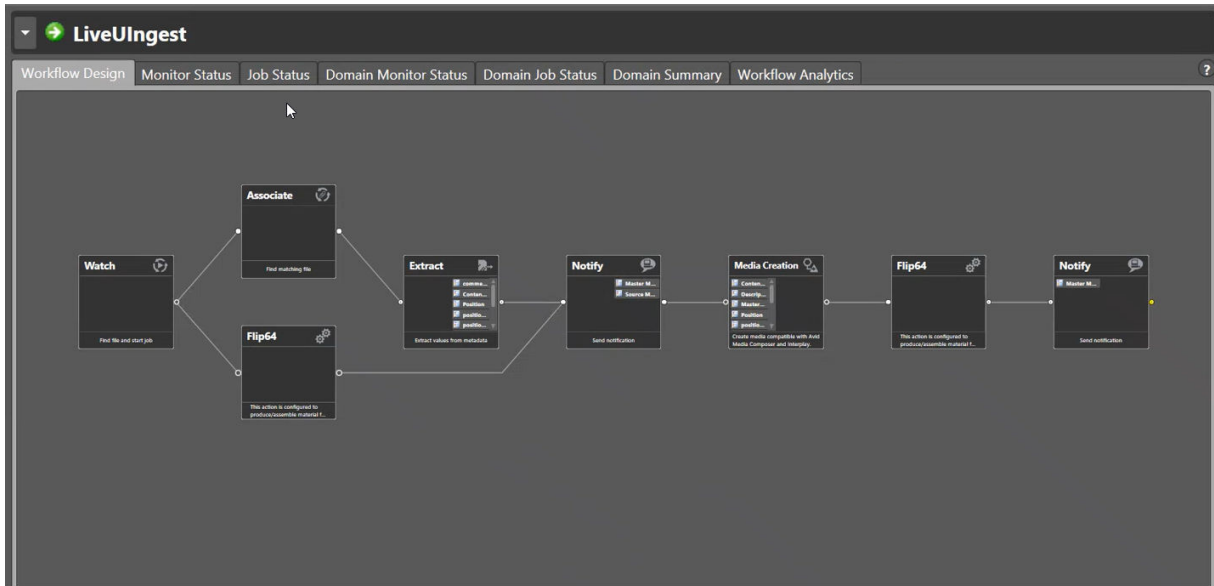


The workflow shows Telestream Vantage performing the following tasks:

- Waits until high quality media and metadata appear in the shared folder on the Ingest server
- Transcodes the files to DnxHD 1920x1080i 59.94
- Extracts the relevant metadata information from LiveU's metadata files
- Generates a headframe (.jpeg thumbnail)
- Ingests the media, metadata and headframe to the AVID MAM system

## About the example workflow

LiveU has provided your organization with an example workflow to help you configure the workflow for your organization.



The workflow shows Telestream Vantage performing the following tasks:

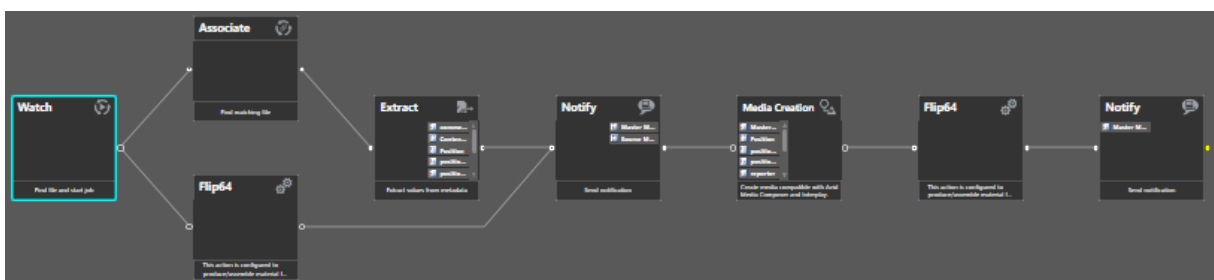
- Waits until high quality media and metadata appear in the shared folder on the Ingest server
- Transcodes the files to DnxHD 1920x1080i 59.94
- Extracts the relevant metadata information from LiveU's metadata files
- Generates a headframe (.jpeg thumbnail)
- Ingests the media, metadata and headframe to the AVID MAM system

## Configuring the Watch action

The following procedure is performed from the Telestream Vantage Workflow Designer in the **Workflow Design** tab.

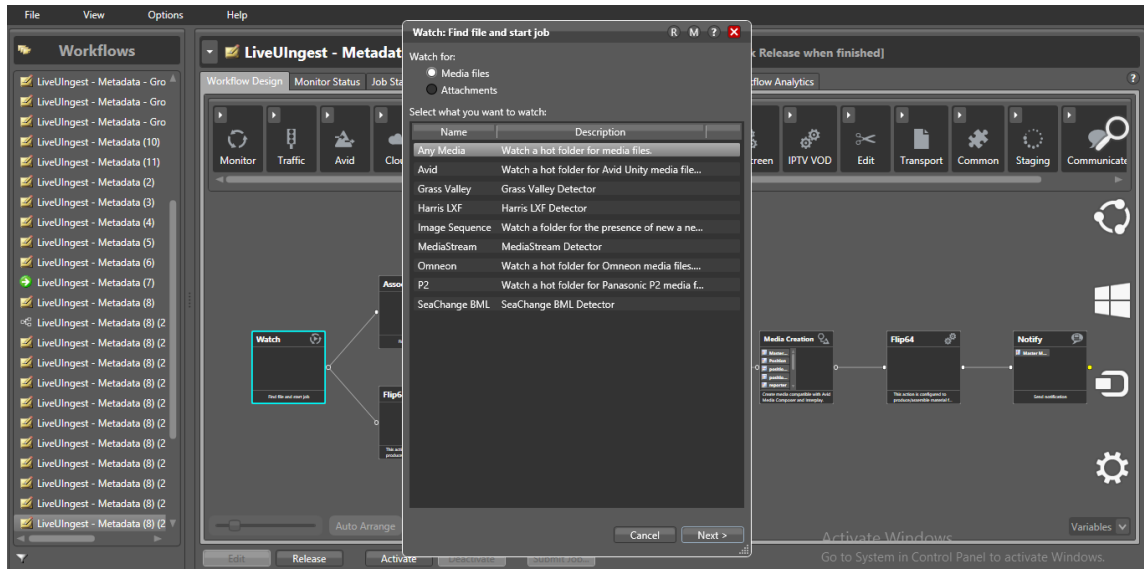
The **Watch** action represents the directory that is shared with AVID on the Ingest server.

When selected, **Watch** is outlined in blue.



## To configure the Watch action:

1. Double-click **Watch**, the first node in the workflow.  
The following window appears.



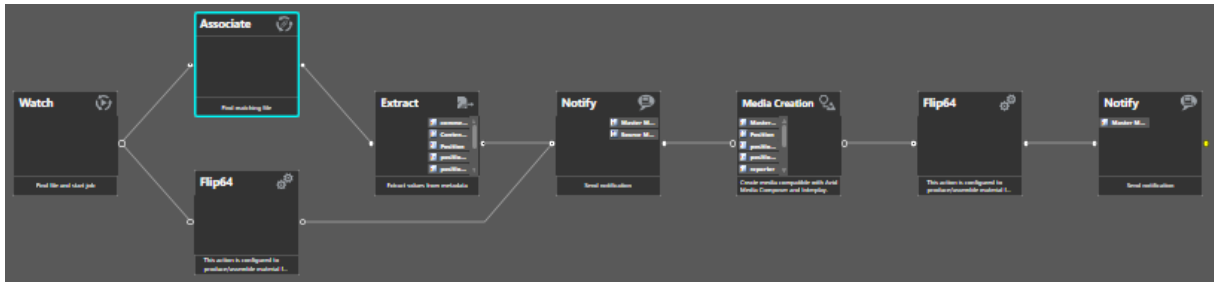
2. In the **Watch: Find file and start job** window, if necessary, select **Any Media** and click **Next**.
3. If necessary, select **Windows File System** and click **Next**.
4. Update the path to `\\<Ingest server IP>\ingestshare` and click **Next** then click **Next** again.  
LiveU recommends not making changes to the Configure settings for this file system detector window.
5. Optionally select **Log Activity** to create a text file of submitted and not submitted jobs and optionally set the destination of the file.
6. Click **Next** and then click **Finish**.

## Configuring the Associate action

The following procedure is performed from the Telestream Vantage Workflow Designer in the **Workflow Design** tab.

Configuring the Associate action involves entering the path of the Watch action to discover the arrival of new files.

When selected, **Associate** is outlined in blue.



## To configure the Associate action:

1. Double-click **Associate**.
2. Click **Next**, then click **Next** again.  
The following window appears.



3. Update the path to `\\<Ingest server IP>\ingestshare` and click **Next**, then **Next** again.
4. Click **Finish**.

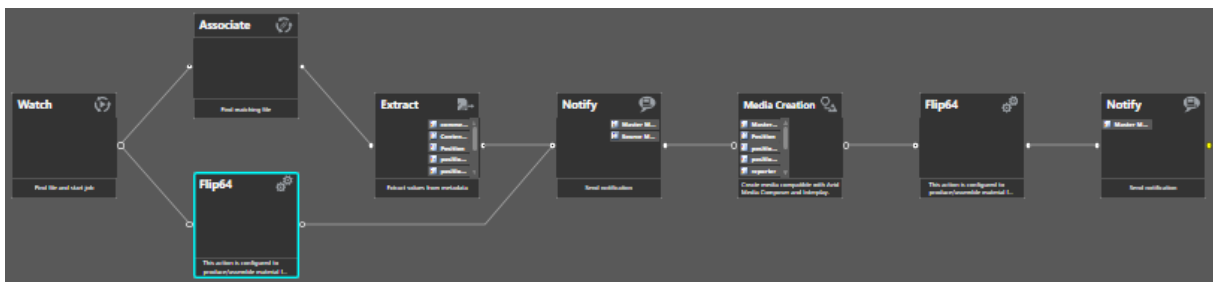
## Configuring the Flip64 action

The following procedure is performed from the Telestream Vantage Workflow Designer in the **Workflow Design** tab.

Configuring the Flip64 action involves setting up the video container and the transcoding, resolution, FPS and audio track codecs.

**Note** LiveU has pre-configured Flip64 parameters. However, any of these can be changed according to your organization's requirements.

When selected, **Flip64** is outlined in blue.

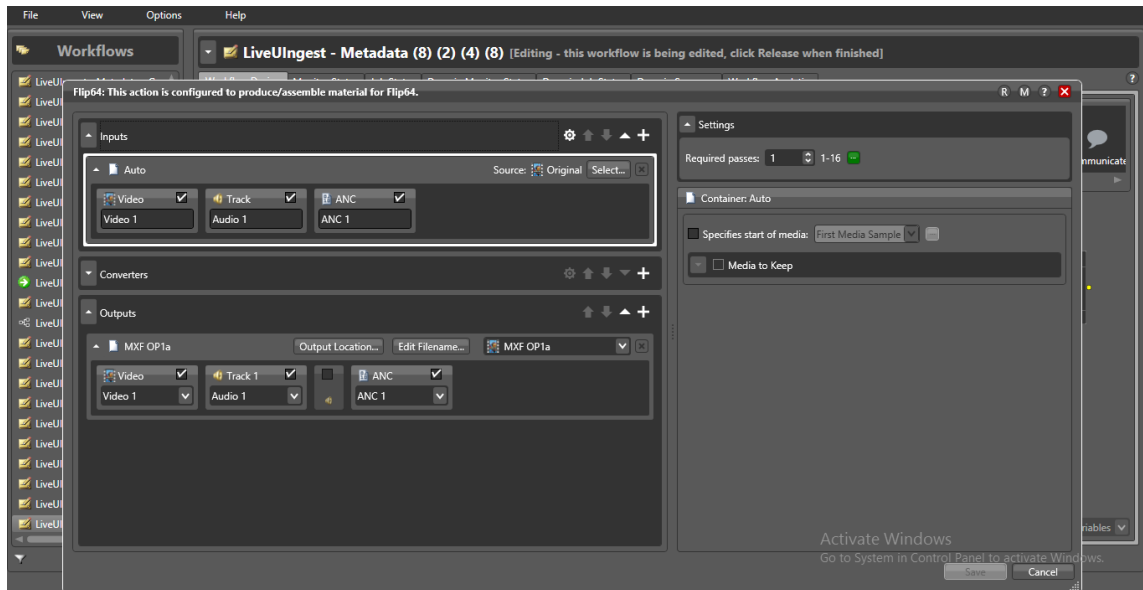


The following procedure refers to the first Flip64 action in the workflow. There is an additional Flip64 action one step before the end of the workflow.

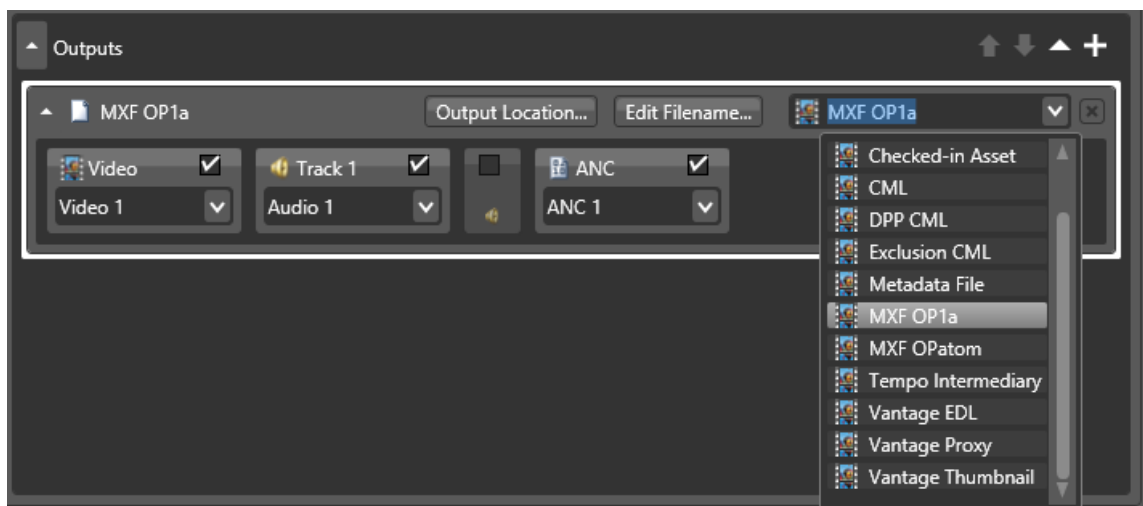
### To configure the Flip64 action:

1. Double-click **Flip64**.  
The following window appears.

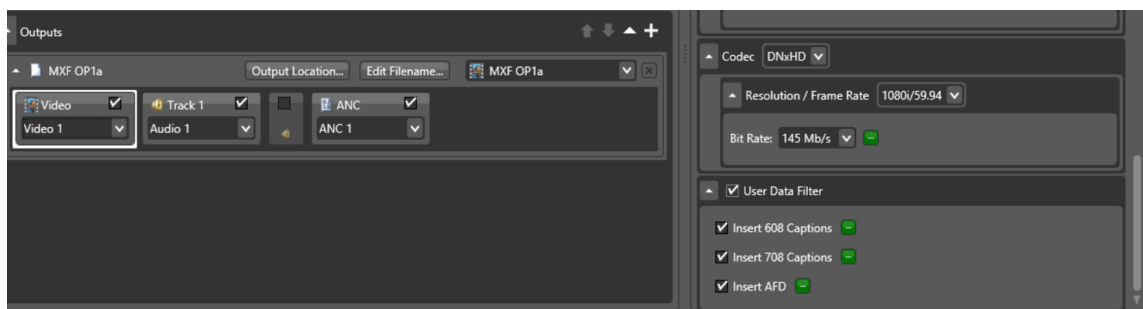




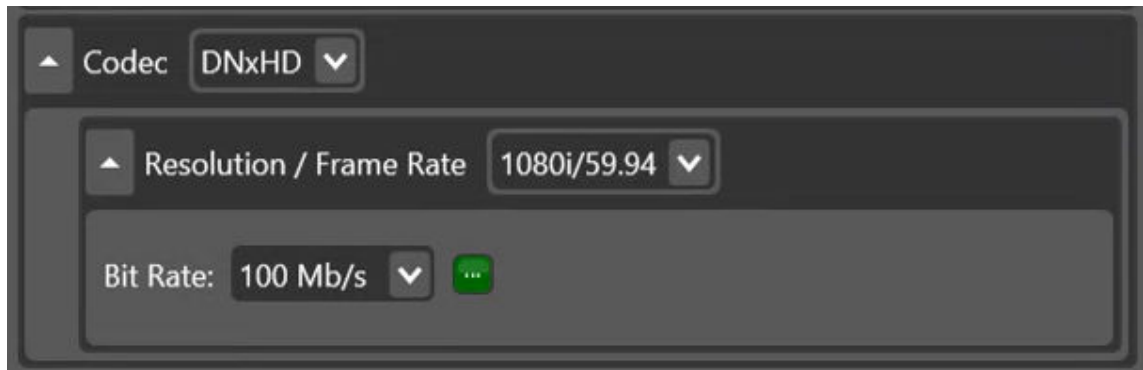
2. In the Outputs area, select a container format from the dropdown list. LiveU selected the **MXF OP1a** container format.



3. Select **Video** to display Settings, in the right pane.

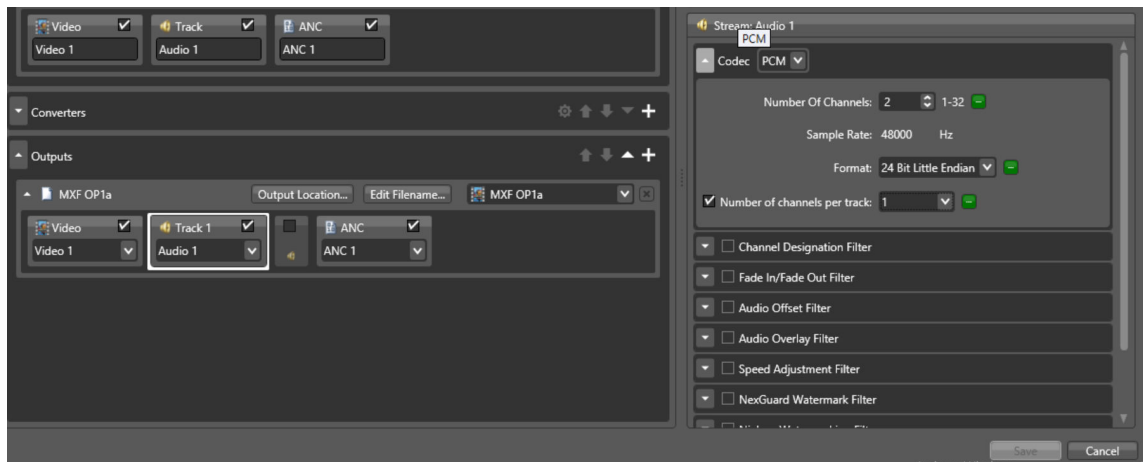


4. In the Settings pane, scroll down to Codec and optionally change the following LiveU settings.



- Codec: DNxHD
- Resolution / Frame Rate: 1080i/59.94
- Bit Rate 145Mb/s

5. Select **Audio** to display Settings in the right pane.



6. In the Settings pane, scroll down to Codec and optionally change the following LiveU settings.

- Number Of Channels: 2
- Sample Rate 48000 Hz
- Format: 24 Bit Little Endian
- Number of channels per track: 1

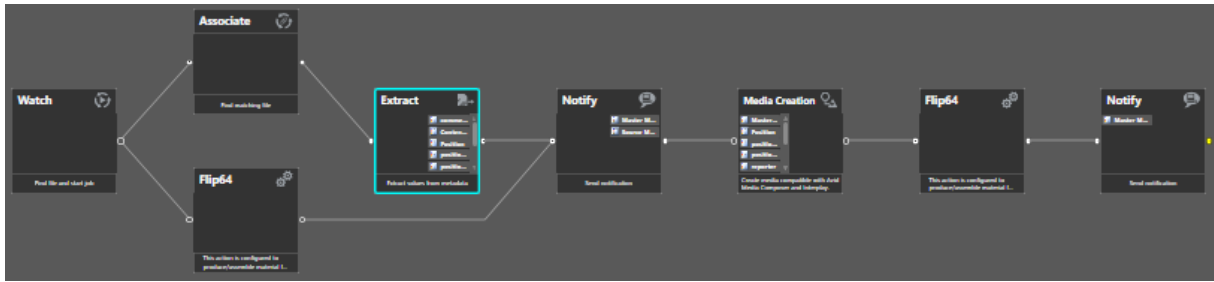
7. Click **Save**.

## Configuring the Extract action

The following procedure is performed from the Telestream Vantage Workflow Designer in the **Workflow Design** tab.

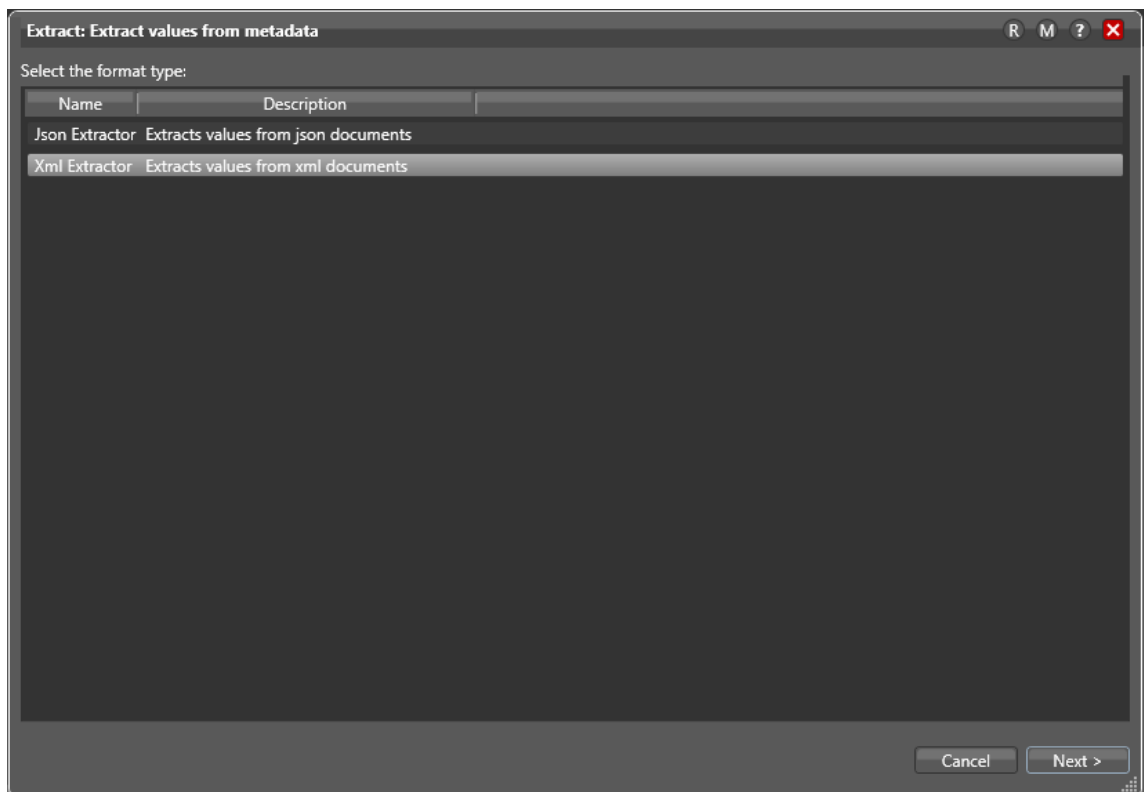
The **Extract** action in the workflow identifies and extracts specific values from LiveU's metadata files.

When selected, **Extract** is outlined in blue.



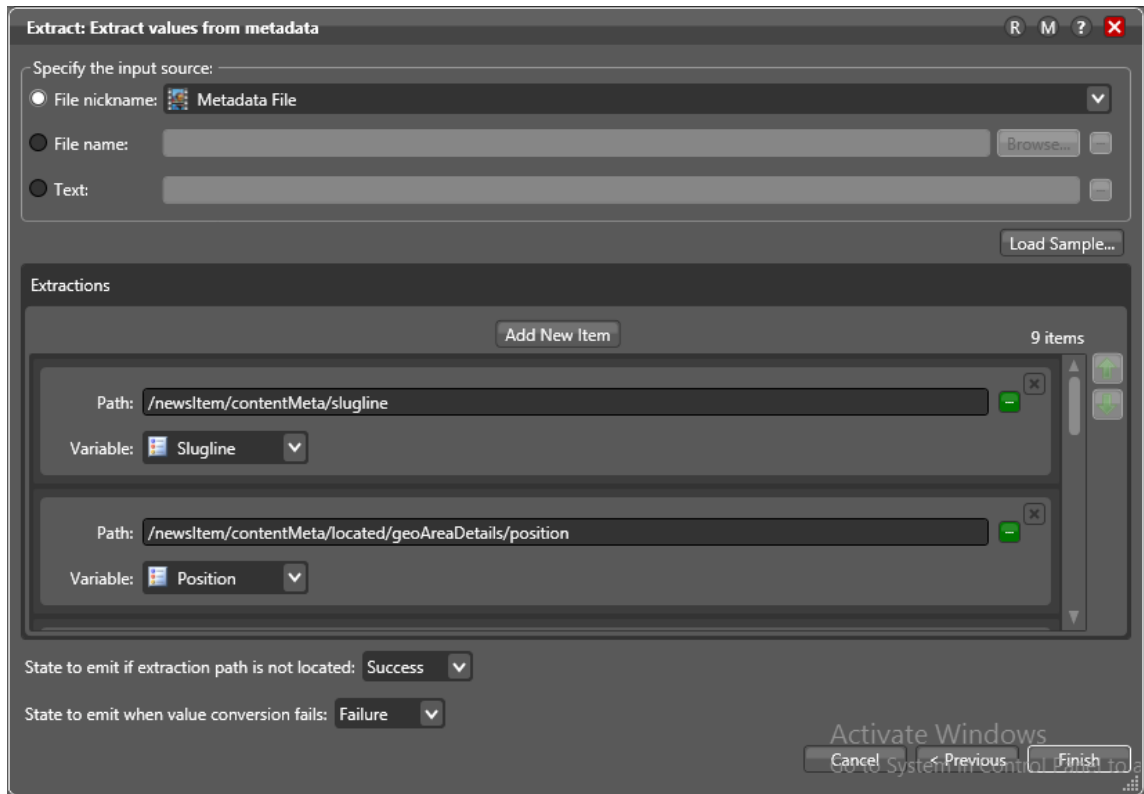
## To configure the Extract action:

1. Double-click **Extract**.  
The following window appears.



2. Make sure that the source from which the metadata values are extracted is **Xml Extractor** and click **Next**.  
The following window appears.

**Note** LiveU has already configured the extraction to extract the relevant data from LiveU metadata files and recommends not changing any of the values.



3. Click **Finish**.

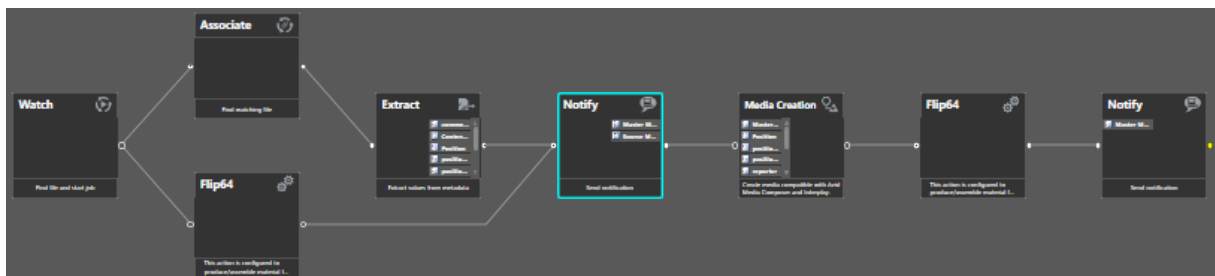
The action displays the metadata files extracted from the media.

## Configuring the Notify action

The following procedure is performed from the Telestream Vantage Workflow Designer in the **Workflow Design** tab.

Configuring the **Notify** action transfers job information to external systems via an XML file .

When selected, **Notify** is outlined in blue.



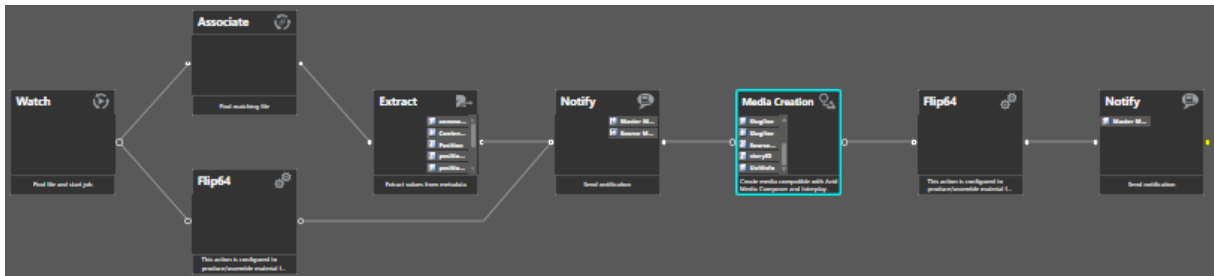
**Note** Do not changes any of the settings already defined in the **Notify** action.

## Configuring the Media Creation action

The following procedure is performed from the Telestream Vantage Workflow Designer in the **Workflow Design** tab.

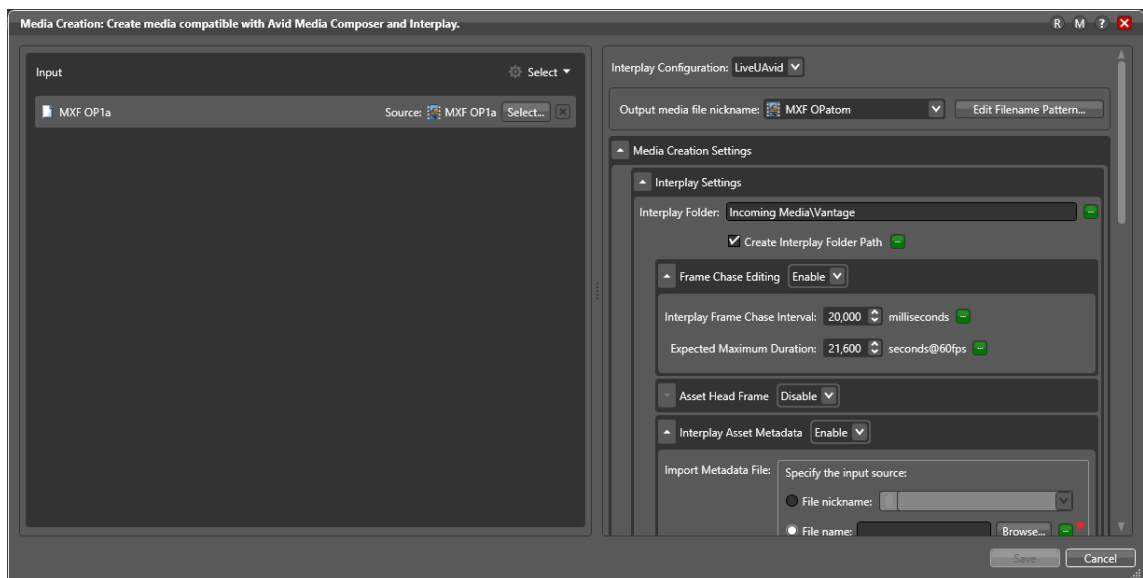
The Media Creation action delivers new media to the Interplay server specified in [Configuring AVID Interplay communication \[24\]](#). You can also set a file's nickname.

When selected, **Media Creation** is outlined in blue.



### How to configure the Media Creation action:

1. Double-click **Media Creation**.  
The following window appears.



2. In the Input area, confirm that the source format is MXF OP1a.  
MXF OP1a is a format supported by AVID. LiveU has not yet test other formats.
3. In the right pane, select **LiveUAvid** from the **Interplay Configuration** dropdown menu.
4. In the right pane, expand **Media Creation Settings**, if necessary.
5. If necessary, configure **Interplay Folder**.
6. Do not change the following settings:

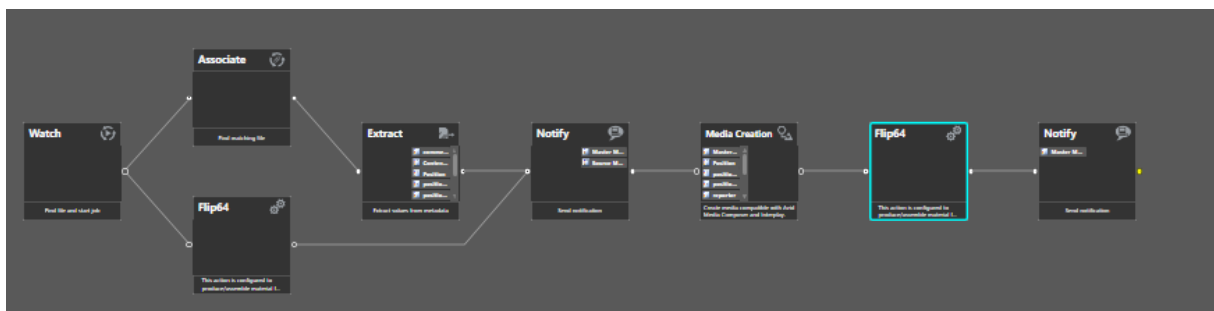
- **Interplay Asset Metadata:** Metadata values have already been configured by LiveU.
  - **Add User Properties:** Confirms user properties have already been configured by LiveU.
7. Optionally select a new file nickname from the **Output media file nickname** dropdown list.
  8. **Physical File Settings:** Click **Browse** to change the paths from the AVID storage to the AAF file location and the MXF file location, respectively.
  9. Click **Save**.

## Configuring the second Flip64 action

The following procedure is performed from the Telestream Vantage Workflow Designer in the **Workflow Design** tab.

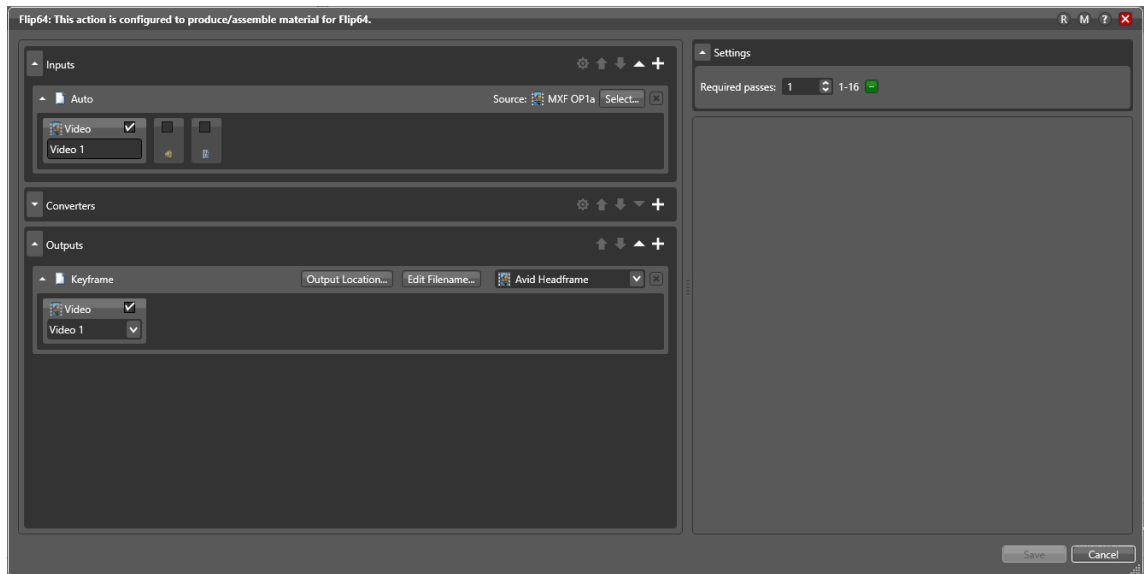
Configuring the second Flip64 action in the workflow involves setting the AVID headframe codec.

When selected, **Flip64** is outlined in blue.



### To configure the second Flip64 action:

1. Double-click **Flip64**.  
The following window appears.



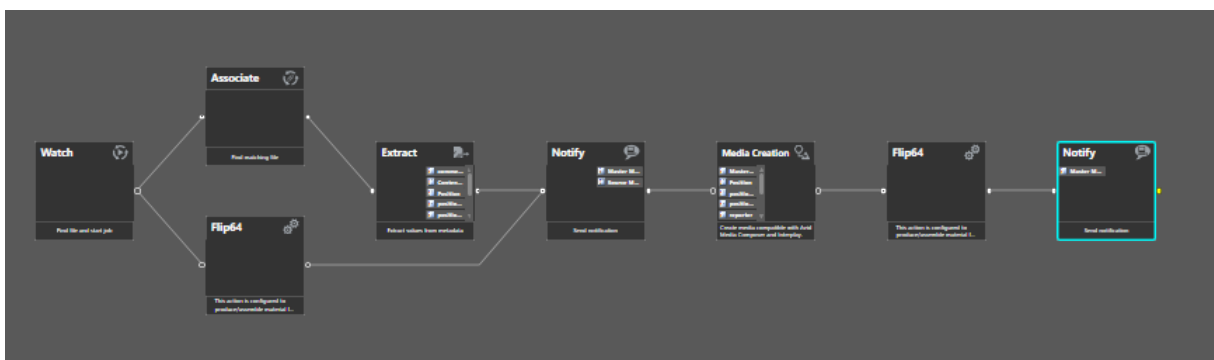
2. In the left pane, scroll down to the Keyframe area and select **Video 1**.
3. In the right pane, scroll down to the Codec area and select a graphic format from the dropdown list.
4. Click **Save**.

## Configuring the second Notify action

The following procedure is performed from the Telestream Vantage Workflow Designer in the **Workflow Design** tab.

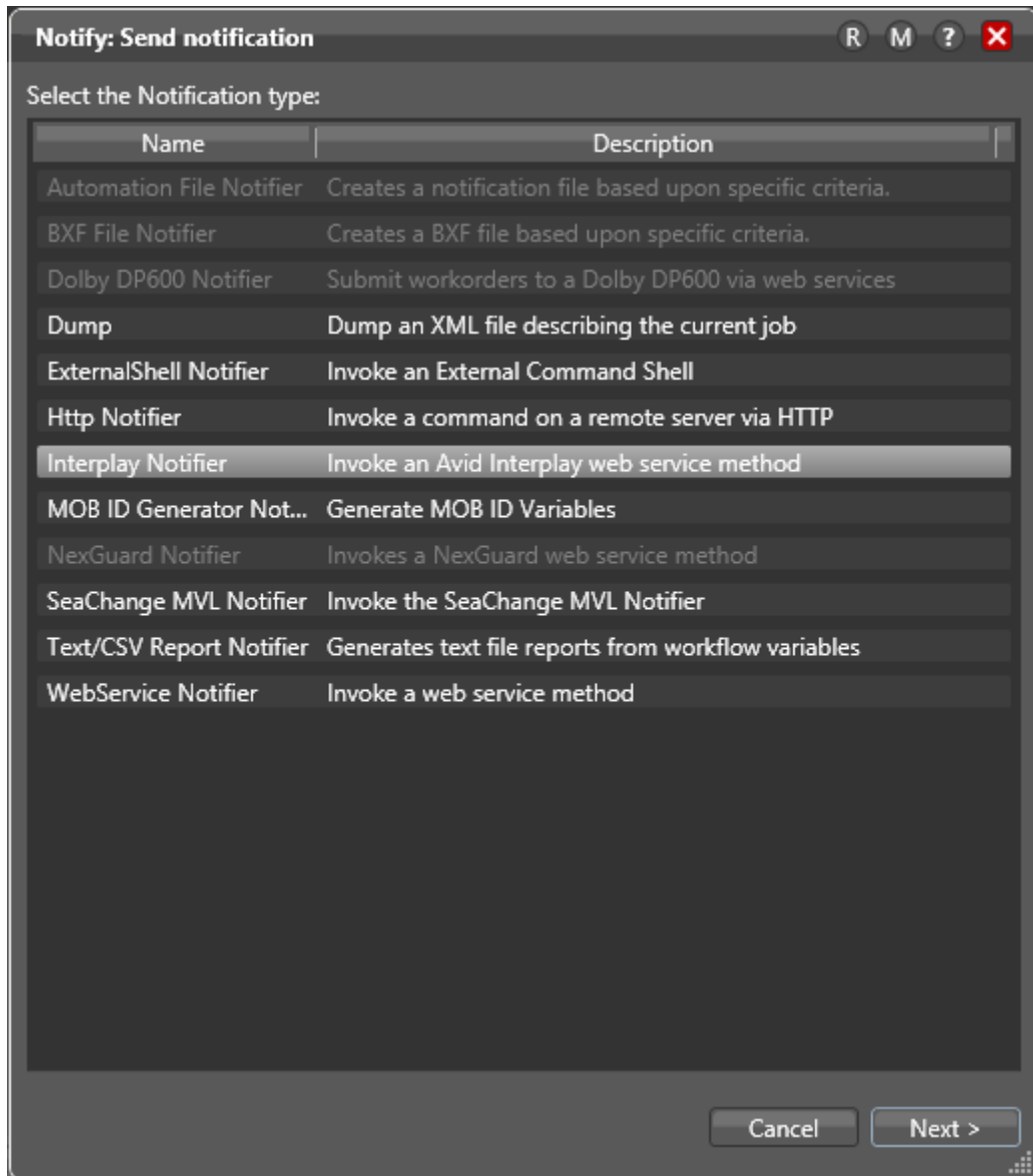
Configuring the second Notify action in the workflow involves setting the notification type, testing the connection and configuring the Interplay notification for headframe check-in.

When selected, the second **Notify** action - the last action in the workflow - is outlined in blue.



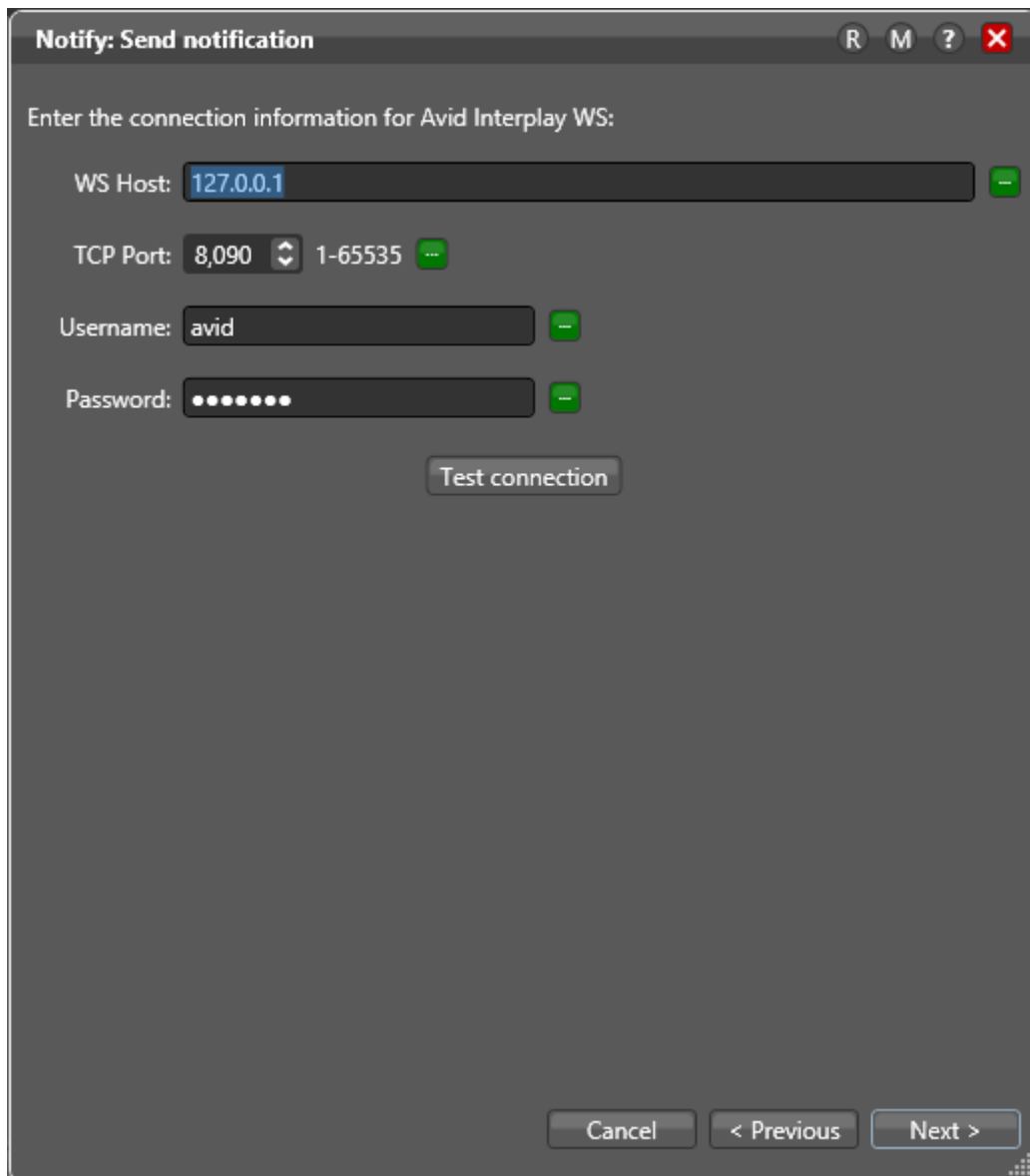
### To configure the second Notify action:

1. Double-click **Notify**.  
The following window appears.



2. Confirm that Interplay **Notifier** is selected, then click **Next**.  
The following window appears.





The screenshot shows a dialog box titled "Notify: Send notification" with standard window controls (R, M, ?, X) in the top right. The main text reads "Enter the connection information for Avid Interplay WS:". Below this are four input fields, each with a green minus sign button on its right: "WS Host:" with the value "127.0.0.1", "TCP Port:" with a dropdown menu showing "8,090" and a range "1-65535", "Username:" with the value "avid", and "Password:" with seven dots. A "Test connection" button is centered below the fields. At the bottom right are three buttons: "Cancel", "< Previous", and "Next >".

3. Click **Test connection**.
4. When the Interplay connection test is confirmed, click **OK**, then click **Next**.
5. Click **Finish**.

## Testing the workflow end-to-end

### To test the workflow end to end:

- Start a live session on an LiveU MMH channel that was configured for the Ingest server. At the end of the session, the media file appears in the shared folder on the Ingest server.

Telestream Vantage automatically begins to transfer the media file to the AVID MAM/PAM archives, according to the workflow setup.

The following figure shows an example of the screen that is displayed in the AVID Interplay system at the end of the transfer process.

